

AUTOHOME

60  
YEARS  
OF ADVENTURE®

>ENJOY YOUR FREEDOM







**2018**

AUTOHOME WORLD LEADER IN SOLD QUANTITIES, FOR ITS IMPRESSIVE  
MODEL RANGE AND INTERNATIONAL DISTRIBUTION NETWORK.



# INDEX

- 10** The history
- 12** Production and evolution philosophy
- 14** My name's Nino Cirani and I work as a photographer
- 16** Comfort without compromise
- 20** Maggiolina Carbon Fiber
- 22** Maggiolina Airlander
- 24** Maggiolina Airlander Plus 360° X-Large
- 26** Maggiolina Extreme
- 28** Maggiolina Grand Tour
- 30** Maggiolina Grand Tour 360°
- 32** AirTop
- 34** AirTop 360°
- 38** Maggiolina Technical
- 44** Accessories Maggiolina - AirTop
- 46** The deserved success
- 54** Columbus
- 56** Columbus Variant
- 58** Columbus Carbon Fiber
- 60** Columbus Technical
- 62** Columbus Accessories
- 66** Handmade shells as from tradition
- 74** Air-Camping
- 80** Air-Camping Technical
- 88** Overland
- 90** Overland Technical
- 94** Overland Accessories
- 98** Overzone
- 102** Overcamp
- 104** Overcamp Technical
- 106** Overcamp Accessories
- 108** Montage System
- 112** Review
- 118** Products comparison: features and equipment

**10**



**44**



**62**





22



NEW 34



46



56



70



108











# THE WORLD OF ADVENTURE



the german offroad magazine  
and the german overland travel magazine  
now available

[www.wieland-verlag.com](http://www.wieland-verlag.com)





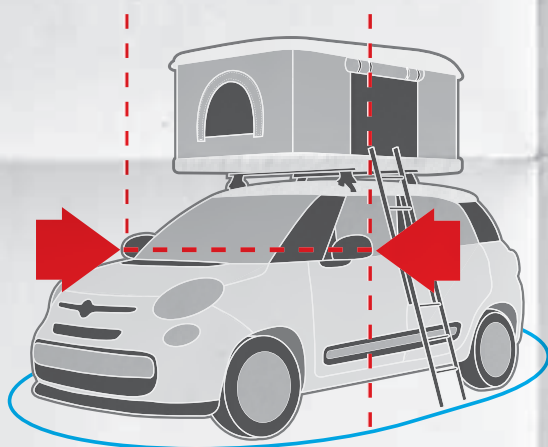
# AUTOHOME®

## IMPORTANT INFORMATION

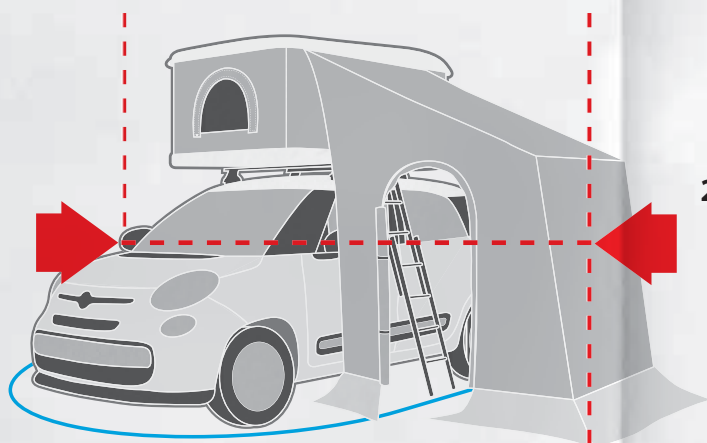
# PARKING & CAMPING

**SPEND THE NIGHT WHERE YOU PLEASE, PUT THE BRAKE ON AND GO TO SLEEP\***

Most Autohome tents are Double Use:



1. when travelling for overnight stays in public and parking areas.



2. when camping with the many accessories available: porches, awnings and cabins.

\* In car parks and public areas, putting up tents which exceed overall vehicle dimensions are considered prohibited forms of camping in Europe. For legislation in other countries, check with your Automobile Club.









# THE HISTORY

The world's First rooftop tents that have been designed, patented and manufactured.

For everyone, not only for those who turned travel and outdoor life into a passion, "Maggiolina" and "Air-Camping" are an historical synonym for roof tents.

An original Italian invention from 1958 (see historical information) the Autohome vehicle roof top tent has been the companion of adventurers, explorers and travellers around the world for well over sixty years. The extraordinary intuition of that time, based on the newly born mass car-tourism market, identified a sense of freedom and independence and offered the greatest possible luxury as the basis of its well deserved success in the world market.

**Sleeping, ok. But how? And where?**

**An idea came forth: "... why not attach the tent on the roof of the car..."? The following question was a natural response: yes, but how?**

In mechanics there are countless solutions. It was just a case of understanding which one to adopt.

Between the end of 1957 and March 1959 there had been two innovative interpretations of the same idea: vertical lifting tent and the lateral hinged folding tent. Almost contemporary, the first one – even if just for a while – was the ancestor of the current "Maggiolina" (called "Autocampeggio Stogl" in its first version, from the name of its creator); patented between 1957 and 1958, only a few months before "Air-Camping", the folding fabric roof tent by Giuseppe Dionisio (an inventor and designer also known as Gidion) who obtained the relevant patent in 1959.

Between the shell model and the folding fabric model there was no immediate competition, they were even launched on the same stand at two exhibitions in 1959, first in Milan and then in Cuneo. Both "Maggiolina" and "Air-Camping", as they were named, with their extraordinary ingenuity were a huge success at the time, thanks to technical innovations that remain almost unchanged throughout 60 years of production, travel and history.

Despite the commercial aspect concerning ownership which followed, the "Air-Camping" model – which was easier to manufacture in terms of build and production – gradually attracted the attention of the public, finally entering the myth of adventure and extreme camping thanks to the historic adventures of Nino Cirani. This innovative outdoor lifestyle accessory was then being built - under Italian manufacturing licence - in many different countries, including: Brazil, Canada, France, Germany, USA and Great Britain. At first, the roof tent represented an inexpensive alternative to independent travellers, however as time passed, they became an essential travel accessory, to such an extent that the manufacturing company of the time decided to create "Autohome", a brand created and manufactured in Italy that now includes seven styles of roof tents, "Maggiolina", "AirTop", "Columbus", "Overland", "Overzone", "Overcamp" and "Air-Camping", with well over 50 models available to choose from, plus accessories to suit all requirements. Unequivocal equipment for adventure tourists, professionals and lovers of the great outdoors, Autohome is synonymous – today as in the past – with the adventurers who made history. Autohome is the history of roof tents.



# THE WORLD'S







# FIRST - DATING BACK TO 1958



1. Historical information.
2. **Air-Camping** on a small Fiat 500 Giardiniera (Sixties)
3. **Maggiolina** with sunroof (Seventies).
4. **Air-Camping** on Aziza 3: the legendary Land Rover 109 of Nino Cirani.
5. **Air-Camping** while opening (Sixties).
6. Campfire with **Maggiolina** Tent (Seventies).
7. **Air-Camping** roof tent on the Land Rover Aziza 1 of Nino Cirani. Milan – Singapore Rally, 1962.
8. **Maggiolina** roof tent on the roof of Fiat 1500 sedan (late Sixties).
9. **Columbus Days** was the original name. This model was created for camper vans and higher vehicles (Eighties).
10. **Air-Camping** on the roof of Fiat 850 (Seventies).





## AUTOHOME: AN ITALIAN







## HISTORY



## PRODUCTION AND EVOLUTION PHILOSOPHY

**Autohome: historical trademark that has become a legend.**

There are people who dream of travelling and people who make dream journeys. For the latter we manufacture with passion and competence comfortable alternatives to itinerant tourism since 60 years to allow people's dreams to come true.

Autohome's innovative and creative spirit, as well as its strictly made in Italy design, top quality materials and state-of-the-art technology all result in the realization of top quality roof tents that can meet any need of tourists having travel and freedom in movement as absolute priorities.

The first items have been patented and presented in 1958; in sixty years of history Autohome has been attending international fairs and spreading in new markets (United States, Australia, Japan and South Africa) showing the company's creative spirit and professionalism by a brand that became the most famous Italian brand in the world of design and production of roof tents.

Zifer Italia has wisely handed down its success to Autohome brand, which offers a prestigious line of 7 roof tent models, 60 kinds of equipment and a wide range of accessories and allows to turn adventure and vacation in freedom into a real lifestyle.

A healthy manufacturing company, highly qualified technicians, innovative technological material and patents have been characterizing the story of our Italian brand, which represents since more than half a century the ideal companion of trips and adventures discovering the most charming places in the world.

Made in Italy quality and passion for outdoor are our marketing strategies: no commercial business or production abroad. These are simply our features.



“MY NAME’S NINO CIRANI AND  
I WORK AS A PHOTOGRAPHER...”



**WELCOME**

Nino Cirani was born in Modena in 1926. Although he graduated in Architecture, he was renowned as a photographer, journalist, explorer and protagonist of car rallies around the world. Eating up thousands and thousands of miles, from the deserts of the Sahara to the forests of Amazon, in extreme and sometimes very dangerous conditions, he became a legend to all Land Rover drivers.

Throughout his journeys his travel companions varied, but there were two constants that never changed: his unstoppable Land Rover, named “Aziza”, and his Air-Camping tent. Thanks to the experiences and suggestions of Nino Cirani, the Car-Top Tent is now a state-of-the-art, ergonomic, comfortable and practically indestructible tent.

Today Autohome honours Nino Cirani with the tent that has been with him for 30 years, with the same colours and the same technical innovations adopted by the man who made it a legend.







# TO THE WORLD OF AUTOHOME





# WHO SAID THAT ADVENTURES ARE UNCOMFORTABLE?

When choosing an Autohome you will see a large range of models that are the result of almost sixty years of experience, tried and tested products, proven by their outstanding sales success. All Autohome products have undergone exhaustive testing in extreme conditions, from polar cold to torrid desert, from sand storms to unceasing tropical rains. Autohome, the original vehicle roof top tents, with their technical and innovative features, are exported all over the world to satisfy the demands of the most demanding of travellers. Quality is paramount in the construction, from the technical fabrics to the resins and metals of the shell, to ensure comfort and safety without compromise. Autohome is not only a successful brand, but also a lifestyle, enabling people to enjoy the outdoors in a safe and comfortable way, whether it's on a small car for a family weekend or an a four wheel drive ready to explore off the beaten track. Autohome is number one, not just on quantities sold and international distribution network, but also for its impressive model range with over thirty variations.



AUTOHOME QUALITY CERTIFIED



## COMFORT







WITHOUT COMPROMISE











CARBON FIBER  
AIRLANDER  
AIRLANDER PLUS  
AIRLANDER PLUS 360° XL  
EXTREME  
GRAND TOUR  
GRAND TOUR 360°

AIRTOP  
AIRTOP 360°



# PASSPORT to freedom

When we think about “tour operators, all inclusive travel and travel offers” there are plenty of options to choose. If you really want to be free and independent by planning your holiday day by day, there is an option for you: Maggiolina.

Maggiolina is your passport to freedom, to unspoilt beauty, to far away destinations and away from it all.

Wherever you are, suitable for all types of cars, Maggiolina can be opened in seconds, offering you a comfortable snug bed with no need for floor support. It doesn't matter if the land is wet, muddy, rocky or asphalted you don't need to pitch your tent, because Maggiolina is on your car.

Maggiolina Carbon Fiber also has plenty of space for your travel accessories. Easy to pack away, you can leave any place at a moments notice.



## CARBON FIBER

The innovative and exclusive production of Carbon Fiber shells allows to have a decisively lighter tent. Amongst the main features: extraordinary mechanic resistance and high thermal insulation.



### CARBON

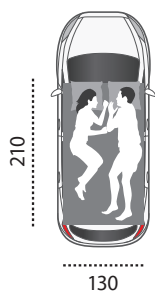
**Internal capacity of the shells:**  
Small about 196 l  
Medium about 220 l



60  
YEARS  
OF EXPERIENCE

## 60 years of adventure

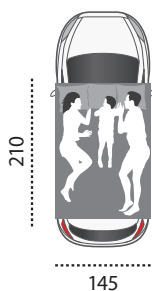
"The travelling bedroom: designed and built with passion, we hope you'll enjoy it, have a good journey!" – thus ran the advertising for the Maggiolina Roof Tents of old. Autohome celebrated the sixtieth anniversary of its historic model Maggiolina, with a special commemorative model, a worthy hi-tech homage to this incredible products extraordinary adventure – the Maggiolina Carbon Fiber "60th Anniversary" – this was the new challenge, "enjoy the future today!"



### SMALL

Art. MCF/01  
Maggiolina Carbon Fiber  
Small, made of carbon  
fibre shells.

Recommended for two  
adults.



### MEDIUM

Art. MCF/02  
Maggiolina Carbon Fiber  
Medium, made of carbon  
fibre shells.

Recommended for two  
adults and a child.





# ADVENTURE holidays

No more stressful searching around for accommodation. No more worries about finding a place to set up your tent before the night sets in. Pick Maggiolina and you are away!

Adventure holidays or weekend breaks away from the stress of everyday life. In the freedom of your car you can enjoy the comfortable, safe and welcoming accommodation of Maggiolina and you can remain in touch with the wonders of nature and enjoy your restful break.

With its aerodynamic design, Maggiolina is the perfect choice for any vehicle small or large.

Manufactured with the traditional care, Maggiolina Airlander and Maggiolina Airlander Plus offer great internal volume even when closed.



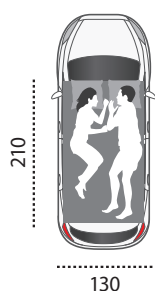
## AIRLANDER

The shell Design which inspired the entire series.

Design 100% Made in Italy, leading the range to success.



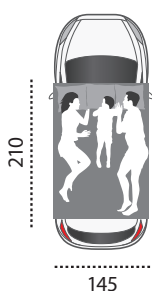
BLUE



### SMALL

Airlander:  
MB/09  
Airlander Plus:  
MPB/09- MPG/09  
MPS/09 - MPC/09  
MPBS/09

Aerodynamic version.  
Recommended  
for two adults.



### MEDIUM

Airlander:  
MB/10  
Airlander Plus:  
MPB/10- MPG/10  
MPS/10 - MPC/10  
MPBS/10

Aerodynamic version.  
Recommended for two  
adults and a child.



### LARGE

Airlander:  
MB/11  
Airlander Plus:  
MPB/11- MPG/11  
MPS/11 - MPC/11  
MPBS/11

Aerodynamic version.  
Recommended for two  
adults and two children.





## AIRLANDER PLUS<sup>+</sup>

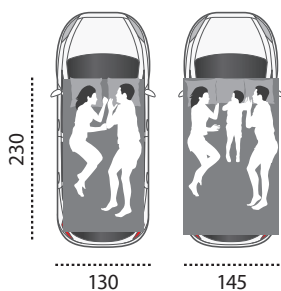
**NEW** - Airlander Plus, with more equipment and tools. It is available in the classic version Blue, Safari, Carbon, Gray and Black Storm with black shells and Carbon fabric.



SAFARI

CARBON

GRAY



### X-LONG

On request, Maggiolina Airlander and Airlander Plus in sizes Small and Medium are available in longer versions: L=230 cm instead of 210 cm.



**Internal capacity of the shells:**  
Small about 196 l - Medium  
about 220 l - Large about 260 l.

**Shells totally manufactured  
with Fiberglass 100%**



**MAGGIOLINA®**  
— AIRLANDER 360° **PLUS**

## X-LARGE

Unique, this model has **6 windows** and **2 doors/windows** protected by a perimeter mosquito net.

A total of **8 apertures** for a perfect 360° view.

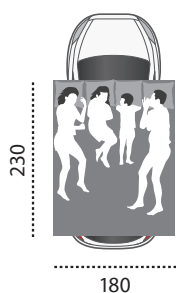
Top of the range fittings.







## TOP AIRTEX® TEXTILE



### X-LARGE

Airlander Plus 360°:  
Art. MP360/12 - Carbon  
Art. MP360BS/12 - Black Storm

Aerodynamic version.  
Recommended for two  
adults and two children.



CARBON

Internal capacity of the shells:  
X-Large about 300 l.

Shells totally manufactured  
with Fiberglass 100%



## The new SERIES

The revolutionary Maggiolina Extreme is a product designed for all off road enthusiasts.

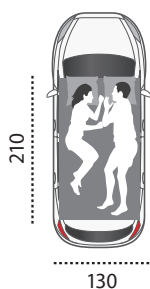
Built to the same high standards with new colours and more aerodynamic design, it incorporates a new style roof rack for all your sporting or essential travelling equipment making it ideal for weekend trips, holidays and adventures on and off roads the world over.



With the special "C" shaped guides built into the top, you can fit specific roof racks to hold items such as canoes or surfboards without any additional attachments.  
Max 25 kg (see the instructions).

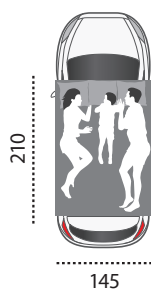
**CARBON**

**GRAY**



### SMALL

Maggiolina Extreme  
Small:  
MG/05 - MC/05  
MBS/05 - M/05F  
The exclusive model with roof rack attachment built into the top. Recommended for two adults.



### MEDIUM

Maggiolina Extreme  
Medium:  
MG/06 - MC/06  
MBS/06 - M/06F  
The exclusive model with roof rack attachment built into the top. Recommended for two adults and a child.



**Internal capacity of the shells:**  
Small about 203 l  
Medium about 228 l

**Shells totally manufactured with Fiberglass 100%.**





## EXTREME BLACK STORM

**NEW** - Maggiolina Black Storm Exclusive Australian line. It's become part of the Autohome range. Colours: Black Storm Shells and Carbon Colour fabric.



### FOREST



## EXTREME FOREST

The ideal model for those who want to merge with their environment: a variation of the Maggiolina Extreme, which can transport up to 25 kg of essential equipment on its' inbuilt roof rack. The non reflective shells, colour of the fabrics, internal furnishing and silent operation of the openings, are details that offer the bird watcher, hunter, naturalist or photographer discreet concealment.





## A new STYLE

Beauty is a natural gift.

The all new Maggiolina Grand Tour brings into harmony radical design and construction techniques, which give off a certain energy through the new aerodynamic lines, enticing you to spend a few moments inside to discover the hidden quality and comfort of this new model.

Materials have been carefully selected for style, performance, reliability and a consistently accurate finish.

The Grand Tour range includes several models, to suit all needs.



**NEW!**

The Grand Tour series is equipped with two large doors/windows wider than standard: W = 90 cm instead of 75 cm. Doors with adjustable openings, to provide more air circulation while maintaining the necessary intimacy.



**CARBON**

**Internal capacity of the shells:**  
Small about 344 l - Medium  
about 378 l - Large about 461 l

**GRAY**

**Shells totally manufactured  
with Fiberglass 100%.**





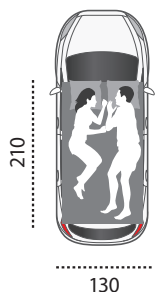
Grand Tour, even when open, is the highest Maggiolina: H max 96 cm.

## HIGH CAPACITY

Grand Tour: offers the most internal capacity of Maggiolina Range when closed. Wide internal volume to fit all your overnight stuff, sport bags, travel tools, backpacks and valuables. Everything sheltered in case of bad weather.



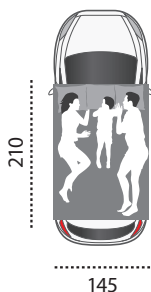
Grand Tour in Black Storm version: black shells and Carbon fabric.



### SMALL

Maggiolina Grand Tour Small:  
MG/12 - MC/12 - MBS/12

Aerodynamic version with spacious interior. Recommended for 2 adults.



### MEDIUM

Maggiolina Grand Tour Medium:  
MG/13 - MC/13 - MBS/13

Aerodynamic version with spacious interior. Recommended for 2 adults + 1 child.



### LARGE

Maggiolina Grand Tour Large:  
MG/14 - MC/14 - MBS/14

Aerodynamic version with spacious interior. Recommended for 2 adults + 2 children.



# TENTS

without **compromise**

If you do not want to give up on the idea of looking at the view even when you are inside a tent, Maggiolina Grand Tour 360° is for you. Four additional new windows at the corners of the tent increase the visibility provided by the doors and windows along the walls. There are now eight apertures, perfect for those who want to live in close contact with nature but protected from insects and curious eyes, thanks to the innovative fiberglass "black edition" mosquito nets, which make it easy to look out but hard to look in. Privacy is guaranteed.

A hi-tech tent, with the best materials such as AIRTEX® for the side walls: waterproof yet able to expel water vapour whilst protecting against the weather. Each door and window can be darkened to keep out the light and sunshine.

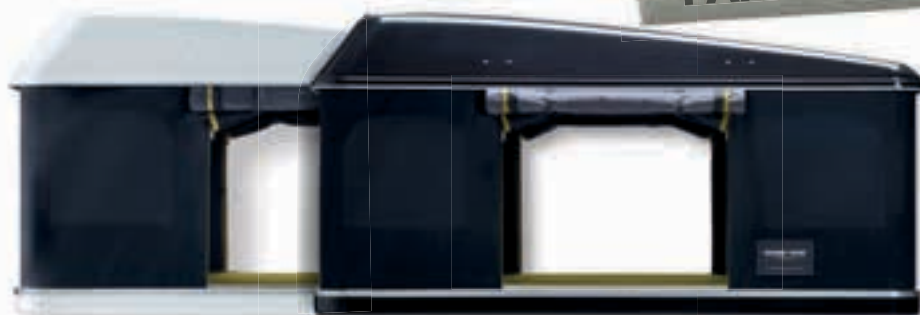
Maggiolina 360° is a tent for all weather conditions: ideal in the heat due to its large windows, but perfect too in the rain and wind, when the apertures are closed.

Ludwig Schmid



**NEW!**

**360°**  
PANORAMIC VIEW



**Internal capacity of the shells:**  
Small about 344 l - Medium  
about 378 l - Large about 461 l

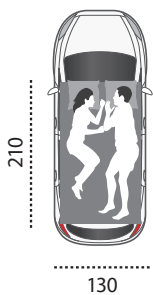
**Shells totally manufactured  
with Fiberglass 100%.**





## TOP AIRTEX® TEXTILE

CARBON

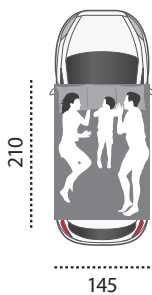


### SMALL

Maggiolina Grand Tour 360°

Small:  
M360/15 - M360BS/15

Aerodynamic version  
with spacious interior.  
Recommended for 2 adults.



### MEDIUM

Maggiolina Grand Tour 360°

Medium:  
M360/16 - M360BS/16

Aerodynamic version  
with spacious interior.  
Recommended  
for 2 adults + 1 child.



### LARGE

Maggiolina Grand Tour 360°

Large:  
M360/17 - M360BS/17

Aerodynamic version  
with spacious interior.  
Recommended  
for 2 adults + 2 children.



# AIRTOP®

## The cross-over ROOF TENT

A new body style for a new opening system: A combination of the Maggiolina design and Columbus gas strut opening system makes the AirTop model, the first shell tent with great accommodation and incomparably quick opening system.

AirTop incorporates all the great features of the traditional Maggiolina series with even more comfort and space. To open simply remove the safety hooks and the tent opens instantaneously!

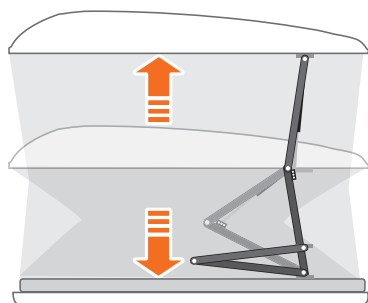
Extreme Adventure with Extreme Comfort!



Video AirTop Tech-TV



### YEAR 2008



The new opening system consists of four gas-operated lifting struts, activated automatically when the external safety catches are released.



CARBON

SAFARI

Internal capacity of the shells:  
Small about 271 l - Medium  
about 305 l - Large about 340 l

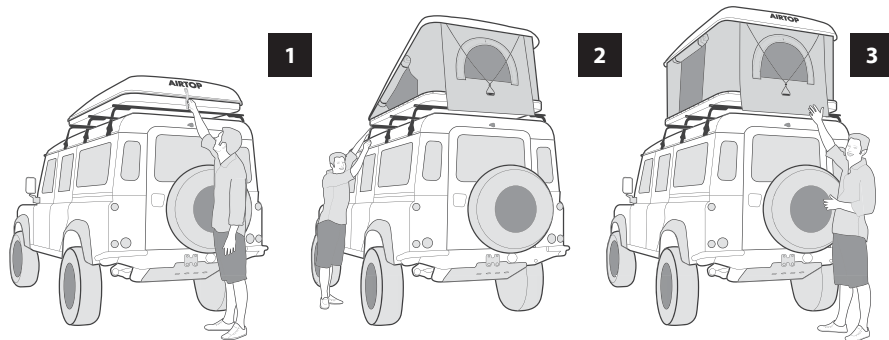
Shells totally manufactured  
with Fiberglass 100%.





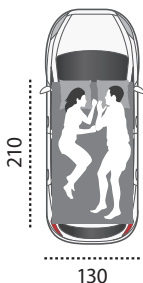
## AUTOMATIC, QUICK AND INSTANTANEOUS OPENING SYSTEM.

Once the latches have been unlocked (1 on the back and 2 on the front), AirTop opens by means of 4 gas-struts.



## EXCLUSIVE SERIES AIRTOP BLACK STORM

Black Storm model has the same internal features as the standard AirTop but comes with a combination of Carbon Colour Fabric and Black Colour Impregnated GRP shell.



### SMALL

AirTop:  
ATC/01 - Carbon  
ATS/01 - Safari  
ATBS/01 - Black Storm

Recommended for 2 adults.



### MEDIUM

AirTop:  
ATC/02 - Carbon  
ATS/02 - Safari  
ATBS/02 - Black Storm

Recommended for 2 adults + 1 child.



### LARGE

AirTop:  
ATC/03 - Carbon  
ATS/03 - Safari  
ATBS/03 - Black Storm

Recommended for 2 adults + 2 children.





## A 360° view

The four new additional windows at the corners bring out the best in the large doors and windows at the sides. A total of eight apertures for the sunlight and contact with nature. Airtop 360° provides an all-round view from the tent, which is protected with a high-tech innovative mosquito net called "black edition", a standard fitting for Airtop 360°: dense and with heavy shading, it keeps away insects and inquisitive looks, for greater privacy.

A refined tent with high-density mattress and pillows with matching yellow ochre zip to close the shades. The Top Airtex® fabric technical keeps out moisture and prevents condensation, ensuring comfort and a good night's sleep.

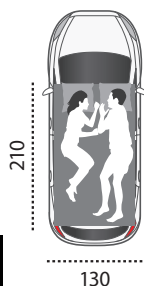
Ideal for torrid climates, with the same weather-proofing as the other tents in the Airtop range, it is one of the best loved tents made by Autohome.

Airtop 360°: "inside you can see outside; outside you can't see in".



**NEW!**

**360°**  
PANORAMIC VIEW



### SMALL

Airtop 360°:  
AT360/01 - Carbon  
AT360BS/01 - Black Storm

Recommended  
for 2 adults.



### MEDIUM

Airtop 360°:  
AT360/02 - Carbon  
AT360BS/02 - Black Storm

Recommended for  
2 adults + 1 child.



### LARGE

Airtop 360°:  
AT360/03 - Carbon  
AT360BS/03 - Black Storm

Recommended for  
2 adults + 2 children.







## TOP AIRTEX® TEXTILE

Internal capacity of the shells:  
Small about 271 l - Medium  
about 305 l - Large about 340 l

CARBON

Shells totally manufactured  
with Fiberglass 100%.









Certainly we compete to win, but it's not the only reason. The attraction of the jungle cannot be described, it's in my adrenalin, it makes me feel alive.

**Mikj Fragapane, raider**



# TECHNICAL 1

## MAGGIOLINA: synthesis of the range

Autohome, the most widespread and variegated range of roof tents, offers 6 categories of shell tents: Airlander, Airlander Plus, Carbon Fiber, Extreme, Grand Tour and AirTop.

The models, the internal room of the shells and the standard equipment are all different, and so are the 2 opening typologies: "by handle" for most of the versions and "by gas springs" – for AirTop. Variables also in the material of the shells: in glass fiber and carbon fiber for the special versions.



Video Maggiolina Tech-TV

**1** - Easy-to-use handle to open and close in a flash. The reliable function is assured by a mechanism consisting of screw jacks linked by a chain drive system within the structure.

**2** - This opening system is reliable, lasts forever and needs no maintenance. It is operated by a removable handle. When the tent is open it will remain steady even in stormy weather conditions\*.

**3** - The handle is also an anti-theft device for your contents stored inside, as the shell cannot be opened without the handle.

**4** - The aerodynamic design coupled with its ample storage capacity will allow you to safeguard all your overnight items, camping/travel accessories, sporting equipment and valuables from all weather conditions.

**5** - All tent models have 2 doors (one each side) and 2 windows (one each end). Each opening is equipped with zip fasteners and mosquito mesh screens.

**6** - Roll up, roll down mosquito net with two zip fasteners.

**7** - Each Maggiolina has a overhead Osram® quality light (18x5 cm), with 3 super bright Leds, with pivotable reflector and easy to replace batteries. Roof is equipped with anti-condensation insulation.

**8** - Maggiolina has three "self-adjustable" locks to offer the perfect locking even after years.

**9** - All tent models are equipped with two doors as standard, one each side, giving the user a choice for entry and exit as well as complete through ventilation of the tent.

**10** - Protection sheet fitted to the base of the door giving greater insulation and protection from dust, rain and cold.

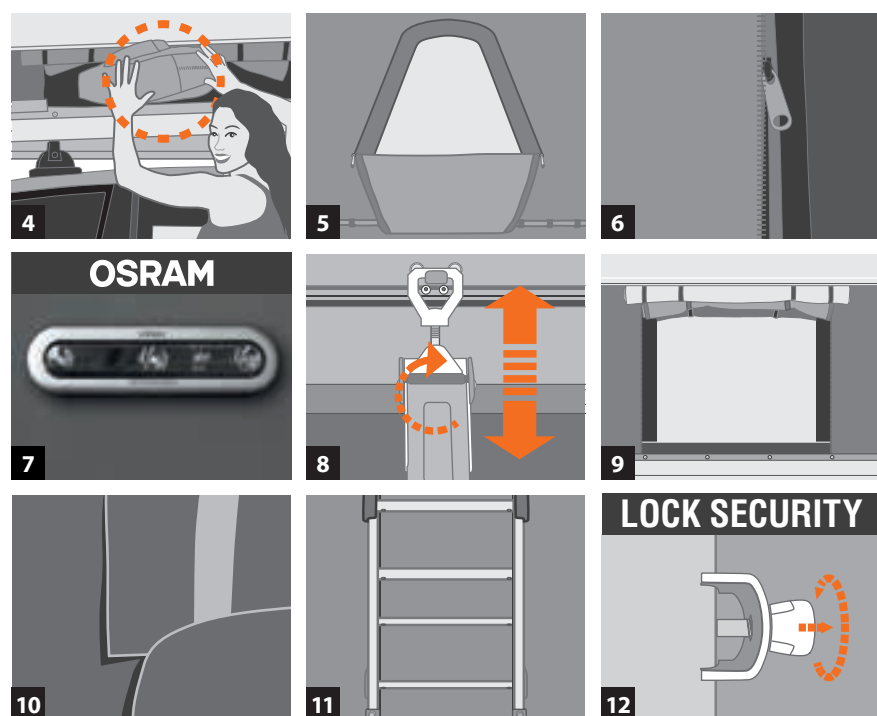
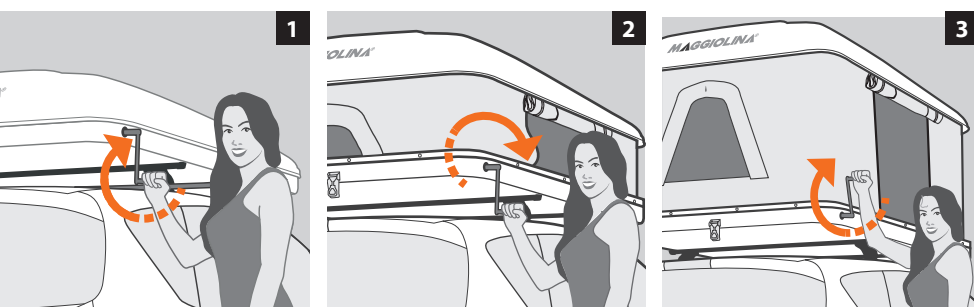
**11** - The aluminium ladder has very small overall dimensions. The antiskid unit is normally supplied with the tent.

**12** - As standard, the automatic spring device blocks the ladder when it is open. The risk of slipping is prevented and the ladder is stable and safe on any terrain.

\* The fabrics remain perfectly rigid, even when the tent is subjected to violent gusts of wind.

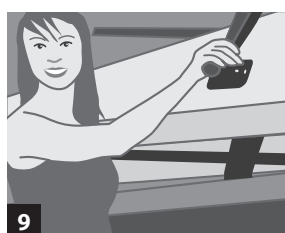
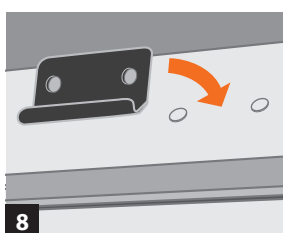
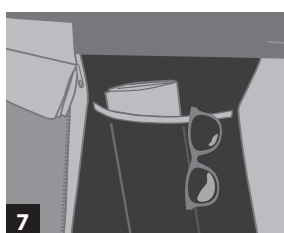
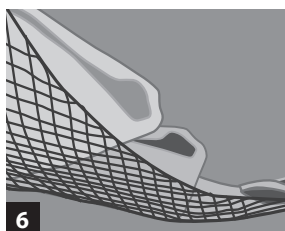
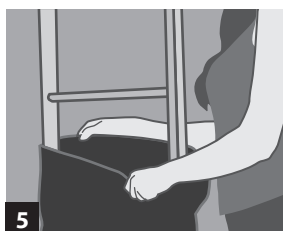
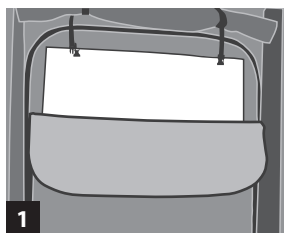
## AIRLANDER

Elegantly designed and aerodynamic classic models perfect on small cars and 4WD vehicles. Models equipped with opening "by handle", soundproof and anti-condensation roof, high density sponge mattress with cotton cover, 2 to 4 pillows and adjustable aluminium ladder for medium height vehicles.





# AIRLANDER PLUS | AIRLANDER PLUS 360° XL | GRAND TOUR GRAND TOUR 360° | EXTREME | CARBON FIBER



Top of range versions, further equipped and with more optional than the classic version.

**1 - 2 - 3** - Entry and exit is made using either of the 2 doors\* with vertical zip fasteners.

A second, additional, arc zip fastener is also fitted for partial door opening giving privacy and ventilation which can help eliminate condensation. Standard fitting: 2 windows and 2 French windows. Standard fitting: 2 windows and 2 French windows. For the Grand Tour 360° and Airlander Plus 360° X-Large models: 6 windows and 2 French windows.

**4** - Elastic straps assist in folding the fabric when closing.

**5** - Ladder storage bag.

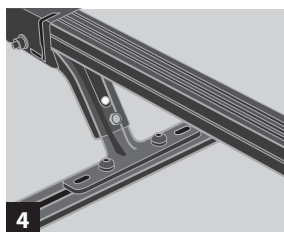
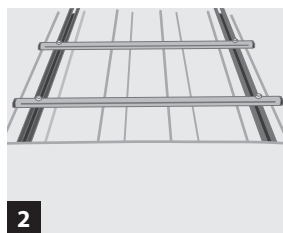
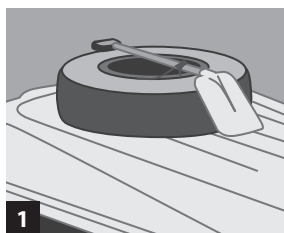
**6** - Stowage nets, useful for sleeping bags, towels and personal belongings.

**7** - Four removable pockets, two each side, fitted as standard.

**8 - 9** - Grand Tour Small and Medium versions are configured for roof bars using 'Kit Fix' Art. K/F (not supplied) suitable for transporting sporting or camping equipment.

\* The Grand Tour series is equipped with two large doors/windows wider than standard: W = 90 cm instead of 75 cm.

## EXTREME



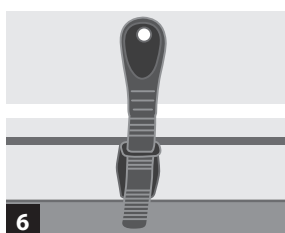
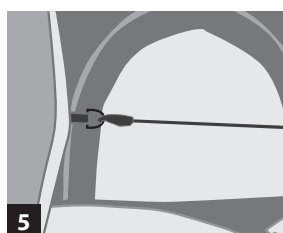
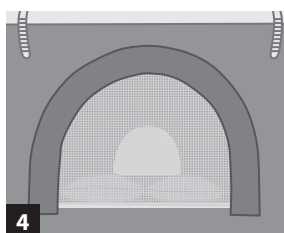
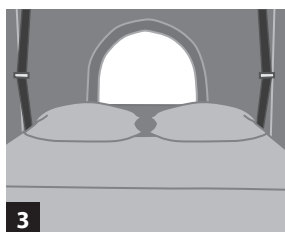
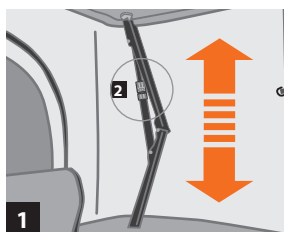
**1** - The series with all the top of range equipment is characterized by the possibility of additional load on the shells.

**2 - 3 - 4** - The special supplied bars are removable and adjustable according to the loads being carried.

All large items (camping tables, chairs etc) can be perfectly stored on the roof whilst bed linen etc can be stored safely inside the outer shells.

On request, various and specific kit fix sets can be fastened to the "C" shaped channels integrated in the shell.

## AIRTOP - AIRTOP 360°



A new shell very capacious and glamorous that can be quickly opened thanks to 4 gas springs. The lifting of the shell takes place in two times, changing the action position. Equipment: top of range.

**1** - As standard: 4 gas springs. The lifting of the shell takes place in two times.

**2** - WINDSTOP - For greater stability in strong winds

**3 - 4** - Standard Equipment includes: 3 doors (1 each side and 1 on the rear of the tent) and 2 arched windows with mosquito netting for ventilation and reduction of condensation. All have mosquito netting and covers against wind or rain. For the Airtop 360° model: 6 windows and 2 French windows.

**5** - As standard: internal elastic straps to help folding of the fabric when closing the tent.

**6** - Closing: simple, adjustable Rally-Race style locking straps.



# TECHNICAL 2

## MAGGIOLINA: Bedrooms made to last

All particulars, from the design concept, materials and components, to the safety features and insulation, have been methodically chosen and thoroughly tested in order to obtain an all-weather proof product that can be depended upon at all times. Just like the structure of a boat, we have used fibreglass to prevent it from aging, discolouring or losing its shape. Its remarkable capacity to withstand knocks and bumps can ensure durability but should the worst happen Maggiolina is easily repaired.



## THICK MOSQUITO NET

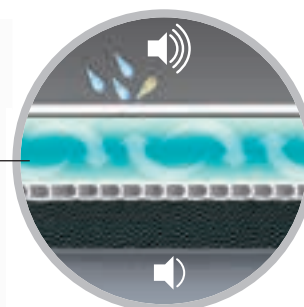
+ □ Dim. 1,12 x 0,96 mm  
[18x20/square inch]

The mosquito net used is in fibreglass, soft and very resistant. It has a fine weft: 18x20 threads per square inch.

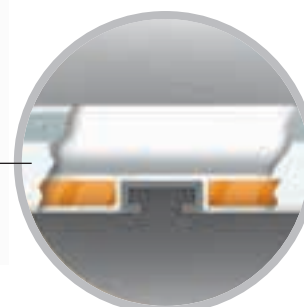
The hole size is very small: peaceful nights everywhere, whether in swampy areas, by river banks or in the presence of very small insects.

## TOP ISOLATION SYSTEM DOUBLE ROOF AUTOHOME EXCLUSIVE

## ROOF INSULATION



Roof insulation with air gap is an exclusive Autohome feature. The air cushion obtained by the internal alveolar panel and the anti-condensation foam allow a better thermal and acoustic insulation and a healthier and more silent place to rest in case of rain.



The "sandwich" construction base has 25mm insulation thickness, while the two "C" shaped built in guides allow easy installation with any kind of roof cross bars (normally without any additional fixings) offering a steady and safe structure in order to withstand any off-road stresses.





## HIGH QUALITY TEXTILES

You can't control the weather. But in a violent storm, in high winds or blistering temperatures, Autohome has the right answer for comfortable tent life.

The AIRLANDER, AIRLANDER PLUS, GRAND TOUR, EXTREME and AIRTOP models have always used prestige Dralon® (a Bayer textile). Unlike plasticized, coated or simply cotton fabrics, Dralon® is waterproof, strong and, above all, breathable.

Every square centimeter of Dralon® helps to renew the air naturally, for genuine wellbeing and comfort inside the tent.

The particular design of the fabric ensures insulation against both the heat and cold, and keeps off glare and excessive sunlight.

## THE TRUTH ABOUT BREATHABILITY



Breathability: 50.8 mm/s

### TEST IT YOURSELF

Pick any portion of the fabric and hold it to your mouth. Blow hard. If you can feel the air on the palm of your hand, it means the fabric is breathable.

With a breathable fabric you never feel the lack of air and can breathe easily even when it is a hot night.

And there are no draughts because you don't need to leave the windows open to get rid of the moisture in the air.

## HIGH TECH TEXTILES

Condensation is a natural phenomenon in a campsite tent.

When the outside temperature falls below the temperature inside the tent, the moisture in the air condenses on the inside walls of the tent in the form of water droplets. This usually happens in the evening, at night or at high altitude when the fabric is coldest.

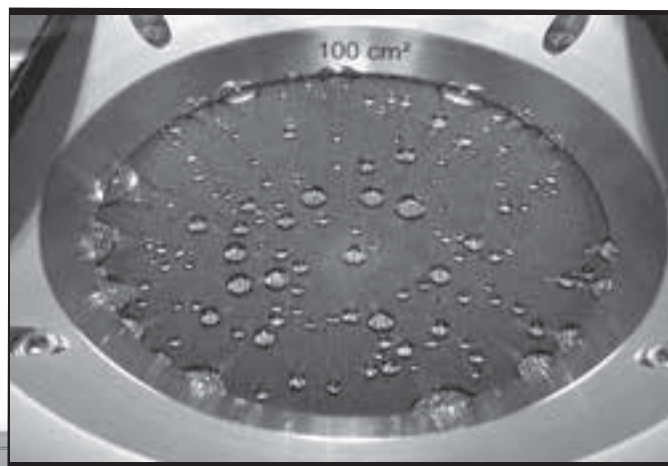
On the basis of many years of experience with the best materials, Autohome has chosen high-quality Airtex® for its new Airlander Plus 360° X-Large, Grand Tour 360° and Airtop 360° models. Airtex® is extremely versatile, is waterproof and strong, and transmits water vapour rapidly, removing it from inside the tent. So condensation is no longer a problem.

## THE TRANSMISSION OF WATER VAPOUR



Transmission speed: 440g/mq/24hrs

Airtex® is a fabric that does not trap water vapour inside the tent but removes it naturally. This is the great difference with plasticized polyester, which is airtight and therefore creates moisture and condensation.



## THE ADVANTAGES OF AUTOHOME TEXTILES



**Waterproof:** Waterproofing treatment is unnecessary because the fibres shed, not retain water, allowing you to fold the tents even when wet.



**Strength:** Strong weft fibres help create a tear and crease resistant fabric, that will not shrink or expand even in extreme temperature fluctuations.



**Stability:** Dralon fibres are pre-dyed before the fabric is woven, making it fade resistant, even under burning desert sun.



**Temperature:** The fabric is guaranteed for use in extremes of temperature, ranging from -30° C up to 70° C.



**Maintenance:** Construction of Dralons' special/unique fabrics ensures a long maintenance free life.



Fabrics ensure the tents are more soundproof and less transparent against light than traditional materials, yet still feel soft to the touch.



**Easy to maintain:** No need of particular treatments.











## ACCESSORIES



A complete range of matching accessories for a comfortable stay.



### Anodised Aluminium Poles



The independent verandah for cars, changing room and awning are made of AIRTEX® tissue.



### VERANDAH FOR CARS

Art. M/05A - cm 200x160x h 240

Quick and easy to assemble it protects you from inclement weather conditions. Provides a spacious sheltered area for cooking, eating, sleeping or storing your essential holiday equipment.

An extremely popular, independent structure allowing you to drive away leaving your equipment well protected.

The framework is constructed from round anodised aluminium poles.



**CHANGING ROOM** (for cars) Art. M/12A - cm 140x170x h 170

**CHANGING ROOM 4X4** (for vans and 4 wheel drives) Art. M/13A - cm 140x170x h 220

The Changing Room offers high level of privacy and protection it's supplementary room closed on all four sides.

Adjustable Aluminium Poles, provide a quick and easy connection to Maggiolina Roof Tents.

The framework consists of round anodised aluminium poles.







#### FEET (Art. M/09A)

Four strong feet allows you to place Maggiolina on the floor if desired. Measuring 25 cm high a safe distance from floor humidity, water, insects, stones etc. Foldable and clutter free they can be installed in any desired position. Useful in camping sites or residential areas which prohibit the entry of vehicles during the night.



#### AWNING (for cars) Art.M/11A-1

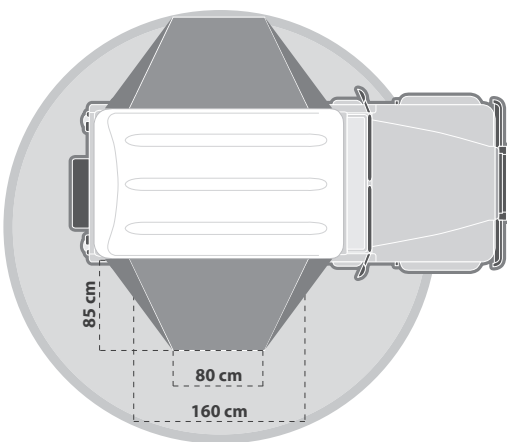
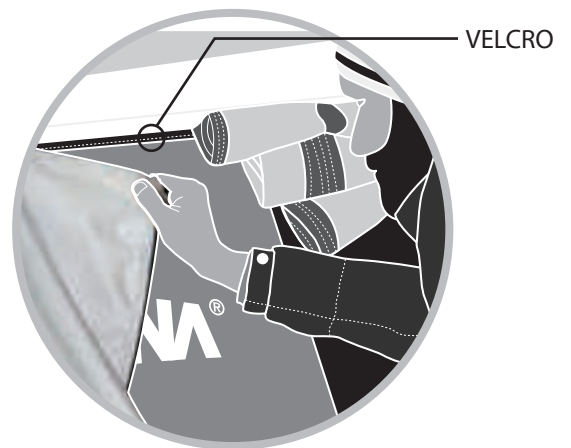
#### AWNING 4X4 (for vans and 4 wheel drivers) Art.M/11A-2

A quick protection from sun and rain. The framework consists of round anodised aluminium poles. It measure 200x160 cm.



#### SOLAR REFLECTIVE AND WINTER HOOD (Art. M/10A)

Made of resin bonded nylon fibre and aluminium powder. Excellent protection from the burning effect of the sun's rays, and equally useful for extra insulation in colder conditions. Quickly attached, by Velcro strips, and removed, it can also provide additional protection in the most extreme of conditions. Can be left in situ when closing the tent.



#### WINGS (Art. M/W01)

"Bat wings"

Entrance protection for additional shelter in case of rain. Simple, easy to use and much appreciated by customers. Made of Airtex fabric with windproof structure, aluminium and steel, space saving. Colours available: Gray and Carbon. Specify with the order.



**NEW**





# MAGGIOLINA:



\* AKIS TEMPERIDIS E VOULA NETOU  
SUPERSTAR TRAVELLERS



PH. MAX DONOSO





When you are miles away from home – in the desert or jungle, when you are having to endure the harshest of conditions in the most inhospitable places, the success of an expedition depends not only on the ability and skills of the explorer but also on the equipment used.

Maggiolina will always offer you comfortable and safe accommodation. Lifted off the ground it is safe from nasty surprises! Those who have tried Maggiolina on their car roof no longer consider any other way of sleeping. The numerous users of all nationalities taking Maggiolina on their travels prove this.

Listing all the journeys and expeditions where Maggiolina has played a key and successful role is simply impossible. We can only say that Maggiolina is an ideal companion to share your exciting adventures.



## THE DESERVED SUCCESS







**ONLY BY KNOWING YOUR DESTIN**





**ATION WILL YOU FIND THE WAY**





**WE ARE ALL AFRICANS**













COLUMBUS

COLUMBUS  
VARIANT

COLUMBUS  
CARBON FIBER



# COLUMBUS®

## Fun and excitement GUARANTEED

A sense of freedom, adventure and truly independent spirit at first glance. Columbus for a weekend away, holiday or for that more adventurous trip. Its exceptional line is a design masterpiece; every detail has been carefully and skilfully designed to produce an innovative and stylish design. Everything from the design concepts, materials and components used, to the safety features and insulation, has been methodically chosen and thoroughly tested in order to attain a lasting and complete weatherproof product. Opening the tent is really quick and easy, thanks to the special gas struts, which lift up the top whilst keeping the fabric properly tensioned. Columbus – your essential travel partner.

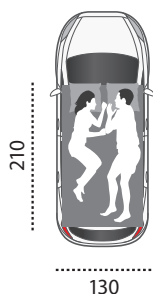


▶ Video Columbus Tech-TV



## TOP AIRTEX® TEXTILE

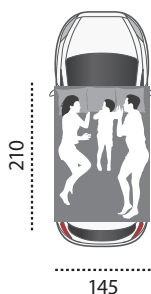
WILD GREEN



### SMALL

Columbus Small:  
C/01

Aerodynamic version.  
Recommended for two  
adults.



### MEDIUM

Columbus Medium:  
C/02

Aerodynamic version.  
Recommended for two  
adults and a child.



### LARGE

Columbus Large:  
C/03

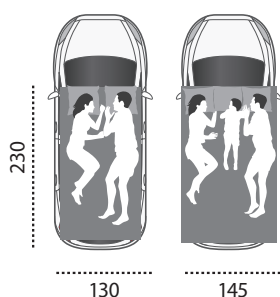
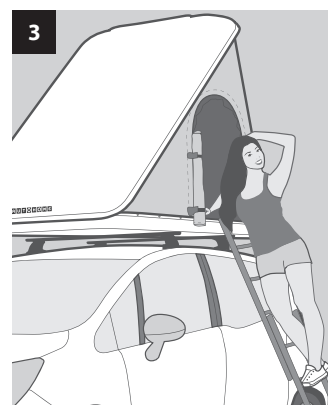
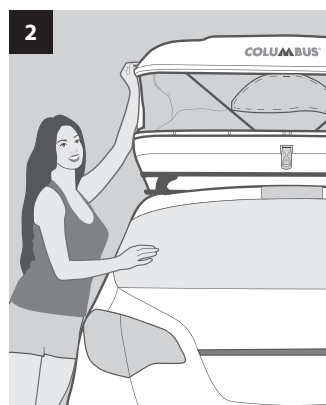
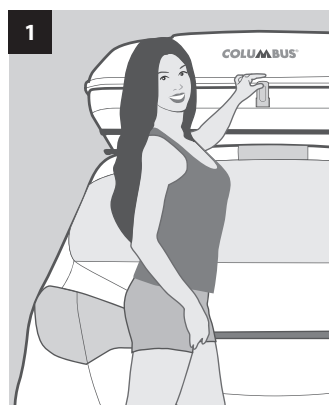
Aerodynamic version.  
Recommended for  
two adults and two  
children.





All Columbus models open in an instant. By releasing the catch at the back, the tent will open thanks to two special gas springs (just like those on car tailgates) which lift the top whilst keeping the fabric tensioned.

Closing it is just as simple; you are then ready to set off again in total safety.



## X-LONG

Optional for Small and Medium: instead of the standard 210 cm long, this version is available at 230 cm in length.



**Internal capacity of the shells:**  
Small about 196 l  
Medium about 220 l  
Large about 260 l

**Shells totally manufactured with Fiberglass 100%.**



## Giving a look at the **WORLD**

A variation of the classic model, available in Gray, Safari or Wild Green Airtex fabric, and characterised by the versatility of the windows and doors. The large rear opening can be adjusted to suit personal preferences according to climate and conditions, without compromising privacy, allowing you to really enjoy the great outdoors.



## TOP AIRTEX® TEXTILE

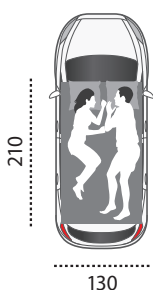


GRAY

SAFARI

WILD GREEN

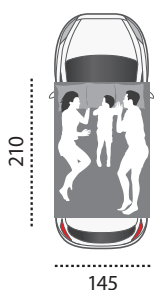
CARBON



### SMALL

Columbus Variant Small:  
CVG/01 - CVS/01  
CVW/01 - CVBS/01

Aerodynamic version.  
Recommended for two adults.



### MEDIUM

Columbus Variant Medium:  
CVG/02 - CVS/02  
CVW/02 - CVBS/02

Aerodynamic version.  
Recommended for two adults and a child.



### LARGE

Columbus Variant Large:  
CVG/03 - CVS/03  
CVW/03 - CVBS/03

Aerodynamic version.  
Recommended for two adults and two children.





## 6 DIFFERENT KINDS OF BIG BACK OPENING



**Example 1**  
100% open.



**Example 2**  
100% opening with  
mosquito netting  
closed.



**Example 3**  
50% door upper opened  
with mosquito netting  
closed, giving 50%  
darkening and privacy  
inside the tent.



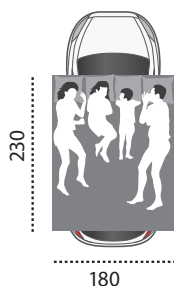
**Example 4**  
50% lower section  
of door opened, with  
mosquito netting closed.



**Example 5**  
20% upper door opened  
with mosquito netting  
closed giving 80%  
darkening and privacy  
inside the tent.



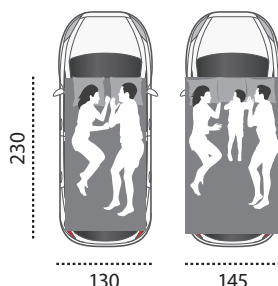
**Example 6**  
Opening 100% protected  
by second, outer door.  
Fixed window that can  
be closed from inside  
the tent.



### X-LARGE

Columbus Variant  
X-Large:  
CVG/04 - CVS/04  
CVW/04 - CVBS/04

Aerodynamic version.  
Recommended for two  
adults and two children.



### X-LONG

Optional for Small and  
Medium: instead of the  
standard 210 cm long,  
this version is available  
at 230 cm in length.

**Internal capacity of the shells:**  
Small about 196 l - Medium  
about 220 l - Large about 260 l  
X-Large about 300 l

**Shells totally manufactured  
with Fiberglass 100%.**



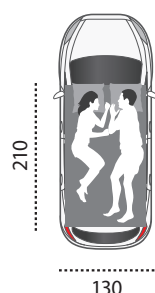
# Take your adventures to **NEW HEIGHTS**

Exploring the unknown! Columbus Carbon Fiber is the leading tent of its kind in the world. Its' unique technical features make it absolutely unique. The new Columbus Carbon Fiber has a weight saving of some 20% over the conventional models, whilst the general features are similar to the Columbus Variant models the Carbon Fiber outer shell has strength properties similar to steel.

The Columbus Carbon Fiber is the most technologically advanced roof tent in the world, enjoy the future!



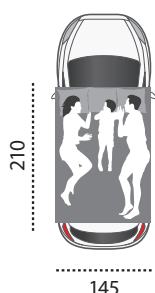
 **Video Columbus Tech-TV**



## **SMALL**

Columbus Carbon  
Fiber Small:  
Art. CCF/01

Aerodynamic version,  
recommended for two  
adults.



## **MEDIUM**

Columbus Carbon  
Fiber Medium:  
Art. CCF/02

Aerodynamic version,  
recommended for two  
adults and a child.







## 6 DIFFERENT KINDS OF BIG BACK OPENING.

Internal capacity of the shells:  
Small about 196 l  
Medium about 220 l

Shells manufactured with  
Carbon Fiber.



TOP AIRTEX®  
TEXTILE

CARBON



# TECHNICAL

## COLUMBUS:

### synthesis of the range

The series Columbus offers roof tents models realized in fiberglass and carbon fiber. Sizes, volumes and internal capacity of the various models are all different and some of them also allow to fit additional bars on the shell useful to transport surf boards, kajaks and other tools.

All the shells have the same shape and design: a fluid, clean, aerodynamic line and esthetically perfect also on small vehicles.

**Shells opening** - the opening of the shells takes place automatically with 2 gas springs perfectly allocated, sized and respondent to the most different and extreme temperatures you can face.

**Fabric** - the Columbus roof tents serie uses AIR-TEX, an high quality fabric produced in Germany. It is highly impermeable and has a transmission rate of water vapor of 440 g/mq/24hrs.

**Anti-condensation ventilated roof** - the ventilated roof insulation of posh houses and attics is the element that inspired our staff towards the realization of this project. Columbus has an internal roof insulation that, thanks to the generated air cushion, guarantees a superior thermal and acustic insulation, for a healthier and quieter environment in case of rain. This element is characteristic of the entire line of Autohome's roof tents.

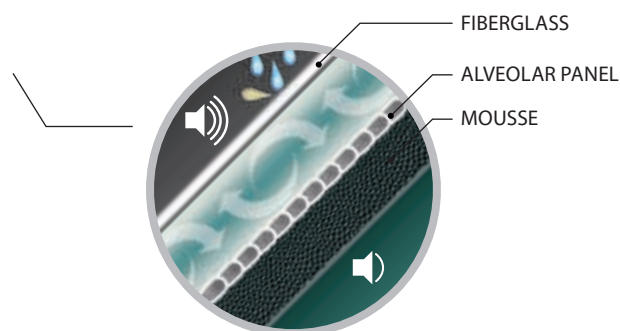
The range is essentially divided in 3 categories: Columbus, Columbus Variant e Columbus Carbon Fiber.



## COLUMBUS

When the roof tent is open, it is characterized by one only rear panel without openings, perfectly stable and firm on the base with an anti-condensation Air Cap (except for the Large version that has also a rear window as standard). On the sides there are two French windows with arched zips useful for partial openings. There are also mosquito nets on all the openings.

## ROOF INSULATION





**1** - Columbus provides extra storage area whilst travelling. The aerodynamic design with its ample storage capacity allows you to carry sporting equipment, travel accessories, bed linen, etc and keep them safeguarded from the weather.

**2** - Two internal safety locks to prevent closure during gusts of wind are fitted as standard (when locks are inserted, the tent does not close).

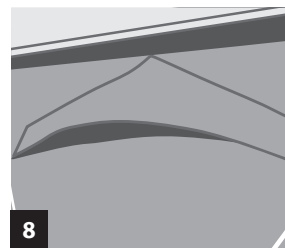
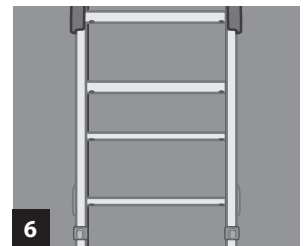
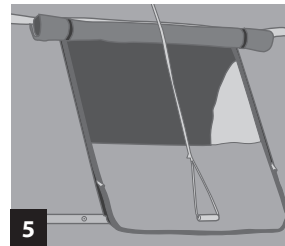
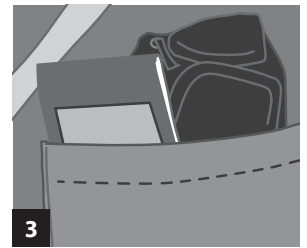
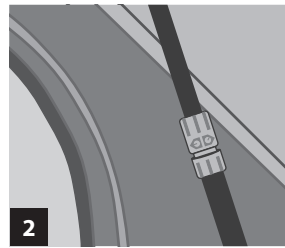
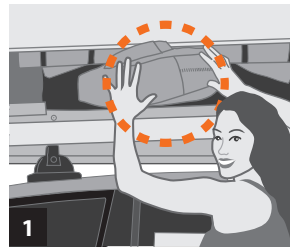
**3** - Available with: 2 roomy storage pockets, one per side.

**4** - Arched door fitted on each side complete with roll up, roll down mosquito nets. Fitted with circular zips, they can easily be changed into windows.

**5** - Large model is usually equipped of a standard opening on the back with dimming device (cm 90 x 90); the opening is protected by a mosquito net, allowing the access to back side and more ventilation at the same time.

**6 - 7** The aluminium ladder is extremely compact, foldable for travel or pull-out during the night.

**8** - The Air Cap is positioned at the highest point of the tent, in order to ventilate the tent which can help eliminate condensation.



## Easy to open, simple to close

Elastic tensioning straps inside the tent help to fold the fabric into place when closing the shell, particularly useful on high vehicles.



## COLUMBUS VARIANT & CARBON FIBER

As the model above mentioned but with more tools. The roof tent is internally equipped with a comfortable net/hammock, a directable LED light (12 volt) and a big opening in the rear that allows to customize comfort and intimacy. All openings have a mosquito net: everything is windproof and anti-shock, therefore quiet sleeps are possible both with breeze and strong wind.

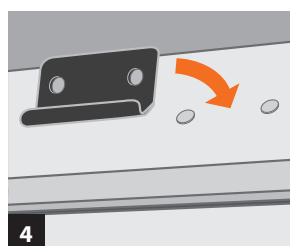
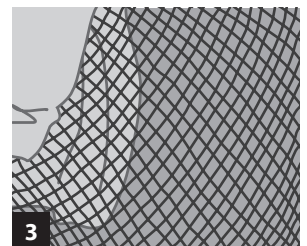
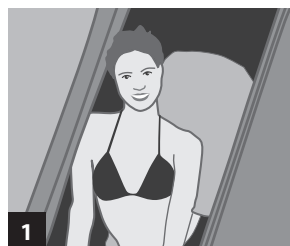
**1** - Full size rear opening, adjustable in 6 variants.

**2** - Adjustable height alloy ladder with automatic locking device. Ladder bag included.

**3** - Storage nets, useful for sleeping bags, towels and personal belongings.

**4 - 5** - The small and medium version is configured for roof bars using 'Kit Fix' Art. K/F (not supplied) suitable for transporting sporting or camping equipment. The model Columbus Variant Small and Medium X-Long is not equipped for the application of Kit Fix.

**6** - Osram® overhead light with 3 super bright Leds, including 3x1,5V batteries.





## ACCESSORIES A great CHOICE of accessories



Anodised Aluminium Poles

A vast range of accessories are offered for your maximum comfort and additional needs. They are extremely easy and quick to assemble and self-contained. Each of the Columbus models can be supplied with any of the following accessories:

- **Verandah** - being self-contained, it allows you to move your car whenever desired.
- **Winter hood** - additional protection against humidity, cold and wind.
- **Awning** - a useful accessory for short breaks.
- **Feet** - to place Columbus on the floor if desired.

Other accessories: roof rack for any kind of vehicle; space saving kit designed to store your AUTOHOME on your garage ceiling, bike rack etc.



### SELF-CONTAINED VERANDAH (Art. C/03A)

Self-contained Verandah (200 x 170 x 245 cm high approx). Fitted with openings on all sides, it is very versatile and useful. Plenty of space for storage, cooking, eating and additional sleeping area.



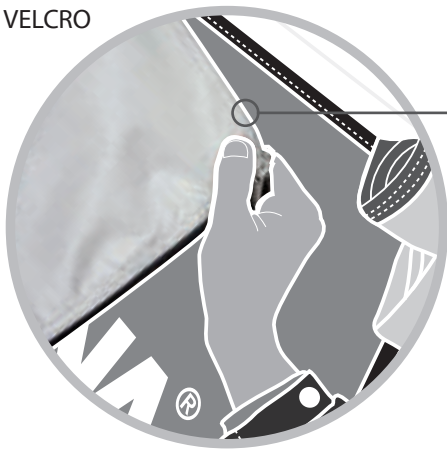


#### FEET (Art. C/06A)

Columbus can also be placed on the floor, transferring it into a conventional tent. Approximately 25 cm high the feet allow you to keep a safe distance from humidity, water and insects. Foldable and clutter free, they can remain attached at the base while in transit.



#### VELCRO



#### WINTER HOOD (Art. C/04A)

The Winter hood is extremely easy to use thanks to the Velcro fastening. One half is attached under the Columbus roof, the other half on the Winter hood. The Winter hood can be attached and remain in situ, whilst travelling.

AL



#### AWNING for cars (Art. C/05A-1)

#### AWNING 4X4 for vans and 4 wheels drives (Art. C/05A-2)

A quick protection area that allows more privacy. Variable sizes according to the height of the car: width of the roof 150 cm, depth 100/200 cm.









**TORBOLE, GARDA LAKE - ITALY:**  
**SURFERS ARE WITH US**





# HANDMADE SHELLS AS FROM



**MATERIAL COMPARISON TABLE**

	SPECIFIC WEIGHT g/cm <sup>3</sup>	TENSILE STRENGTH MPa	ELASTIC MODULUS GPa	COEFFICIENT OF THERMAL EXPANSION K <sup>-1</sup>	COEFFICIENT OF THERMAL CONDUCTIVITY W/mK
<b>FIBREGLASS</b>	1,5	400	26	11 x 10 <sup>-6</sup>	0,35
<b>WOOD</b>	0,7	250	12	14 x 10 <sup>-6</sup>	0,1
<b>ALUMINIUM</b>	2,7	80	70	23 x 10 <sup>-6</sup>	170
<b>STEEL</b>	7,8	400	210	12 x 10 <sup>-6</sup>	40
<b>PLASTIC</b>	1,8	70	3	85 x 10 <sup>-6</sup>	0,1

## FIBREGLASS ADVANTAGES



Thermal insulation



Does not retain heat ± 5° C



Lightness



Long duration



Lack of maintenance



Weathering resistance



Shock resistance





## TRADITION



**ATTENTION!**  
**NO PLASTIC**  
**NO ABS**  
**NO ACRILIC**  
**100% FIBERGLASS**

# ARTISAN QUALITY IN MASS- PRODUCTION

As for most of the versions made by Autohome, the shells are made of fiberglass.

Fiberglass is a particular fabric fiber interweaved and soaked in resinous liquid substances or polyester. This material is also known as GRP, glass reinforced plastic (GFK in German).

The above mentioned really expensive liquid resins, once adequately mixed with catalyzing or accelerating additives, are manually spread with hairy roller brushes on a glassy fabric previously lay on open stamps. In this way, while solidifying, the liquid resin incorporates the glassy fibers and creates the fiberglass. It is a laborious process by hand but it is surely worthy the quality of the result.

Fiberglass is very widespread within the building industry and used especially for roofs and other industrial and urban coverings. It does not get warm under the sun and keeps any closed environment insulated from heat and cold, an indispensable feature for any roof tent.

Thanks to fiberglass, Autohome's shells guarantee excellent quality not only in regard to their endurance and sound proof insulation, but also in terms of lightness and easiness to repair (avoiding this way the high costs of substitution of entire shells, usual in the case of Asian manufacturing that commonly uses simple plastic).

The quality of fiberglass is so great that this material is also used in the manufacturing of boats and cars, especially for bodyworks and hulls that need rigidity and stability throughout time... the best campers, for example, are the ones with single body made with fiberglass and therefore easily repairable (bodies made with ABS are indeed not very diffused anymore because of their difficult reparation processes).

Thanks to its excellent qualities of lightness, robustness and resistance to decompression, fiberglass is also used for windmill blades and within the aeronautical and aerospace industry.

Autohome's shells are designed and manufactured with the best existent material today. No presumption of travelling to the moon (for the time being...).



Radar  
transparency



Mechanical  
strength



Fire resistant



Electrical  
isolation



Resistance to  
environmental  
agents



Dimensional  
stability - does  
not deform



Easy to  
repair









Even though we were hungry and thirsty  
we would never stop until the sun set.  
If you've never slept in the desert you  
wouldn't understand.

**Giulio Ielardi, photo-reporter**









Finally the role of protagonist on the stage of nature, with no one here to applaud it.

**Patrick Galibert - Professional photographer**







**AIR-CAMPING®**

**OVERZONE®**

**OVERLAND®**

**OVERCAMP®**



# AIR-CAMPING®

It was 1964 and, like every year, I was exhibiting the Air-Camping tent at the Fair of Milan, when a person appeared in front of me: « ... My name is Nino Cirani and I work as a photographer and journalist: I am organizing a journey with my Land Rover and another Land Rover driven by some friends of mine. We need to cross the entire continent of Africa, first northwards, from Cape Town to Cairo, and then, west, across North Africa to Morocco, we will then drive back to Italy through Spain and France. I have a taste for perfection, and would like my tent to be suitable for photographic purposes. I would also like to receive any updates, as our journey will be very demanding... ».

An irrepressible joy was flashing in the eyes of this young man. I immediately understood that he was not looking for a simple tent, but for equipment to achieve a big dream.

**Dr. Giuseppe Dionisio**

*Inventor and maker of the Air-Camping tent*



## STATISTICS OF

**30 YEARS OF EXTREME  
CAR RALLIES ON ALL FIVE  
CONTINENTS; 500.000 KM OF  
ROADS, TRACKS AND CROSS-  
COUNTRY TRAILS; 2.000 NIGHTS  
INSIDE THE AIR-CAMPING TENT.**



*Nino Cirani, Tanzania 1964*







# A LEGEND

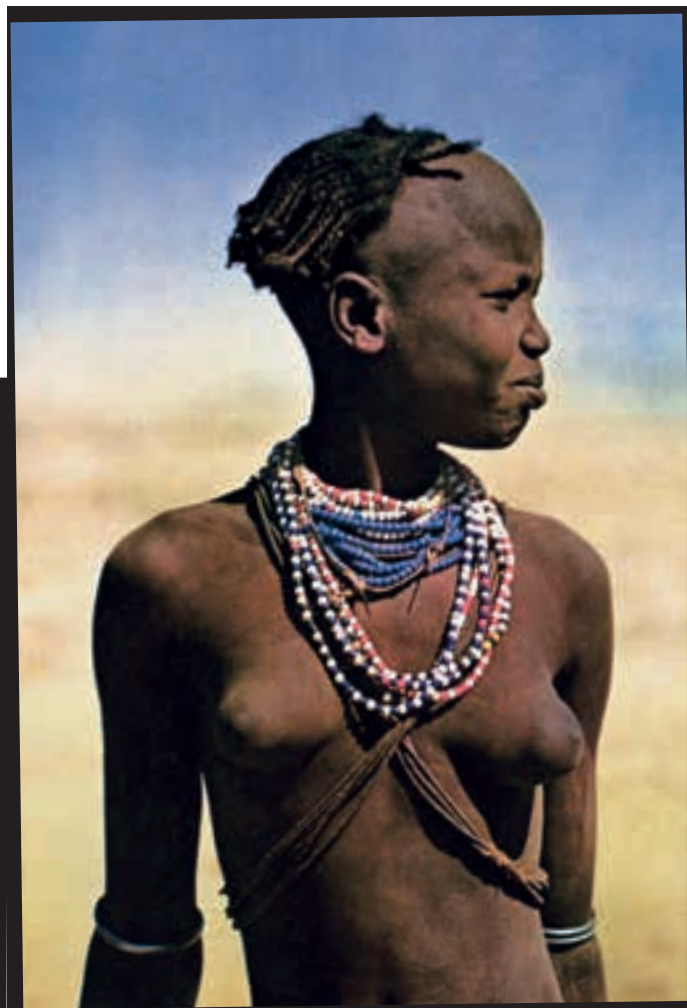


## MAIN CAR RALLIES PARTICIPATED IN BY NINO CIRANI

YEAR	DESTINATION	LENGTH	KM
1959	MILAN - NORTH CAPE Across 10 countries	3 months	24.000
1962	ITALY - SINGAPORE Across 13 countries	5 months	31.000
1963	ITALY - former USSR Across 7 countries	3 months	22.000
1964	JOURNEY ACROSS AFRICA 1 <sup>st</sup> Italian crossing Across 17 countries	9 months	53.000
1968	ALASKA - LAND OF FIRE 1 <sup>st</sup> Italian crossing and record of length Across 18 countries	11 months	<u>103.000</u>
1972	1 <sup>st</sup> SAHARA EXPLORATION Across 8 countries	3 months	25.000
1973	2 <sup>nd</sup> SAHARA EXPLORATION Across 9 countries	4 months	32.000
1974	3 <sup>rd</sup> SAHARA EXPLORATION 1 <sup>st</sup> Italian crossing of the Great Erg of Bilma Across 7 countries	3 months	26.000
1975	ITALY - CEYLON Across 9 countries	9 months	52.000
1976	4 <sup>th</sup> SAHARA EXPLORATION 1 <sup>st</sup> World crossing from Fachi to Termit Mountains Across 6 countries	3 months	30.000
1977	JOURNEY ACROSS AFRICA Across 25 countries	12 months	55.000
1978	AUSTRALIA - NEW ZEALAND	9 months	45.000
1979	5 <sup>th</sup> SAHARA EXPLORATION	3 months	24.000
1980	NORTH CAPE AND ICELAND	4 months	25.000



**"THE BIG DAZZLING OPEN SPACE: THE DESERT, WHERE THE WIND SOMETIMES BLOWS SO HARD THAT, MIXED WITH SAND, IT SUCCEEDS IN GRINDING THE WINDSCREENS OF CARS".**



"Where the sand dunes with their marvellous squiggles disappear beyond the horizon, under a hopeless and merciless sun, that hard, demanding nature, where everything is strictly motionless and essential, made me feel perfectly at ease, as if I was born and had always lived there."

Everything could be found in "Aziza": Tools, cooking utensils, additional fuel tanks, a small fridge (to preserve photographic films), one hatchet, one pickaxe and one shovel. Also one machete, one rifle and one hand gun.

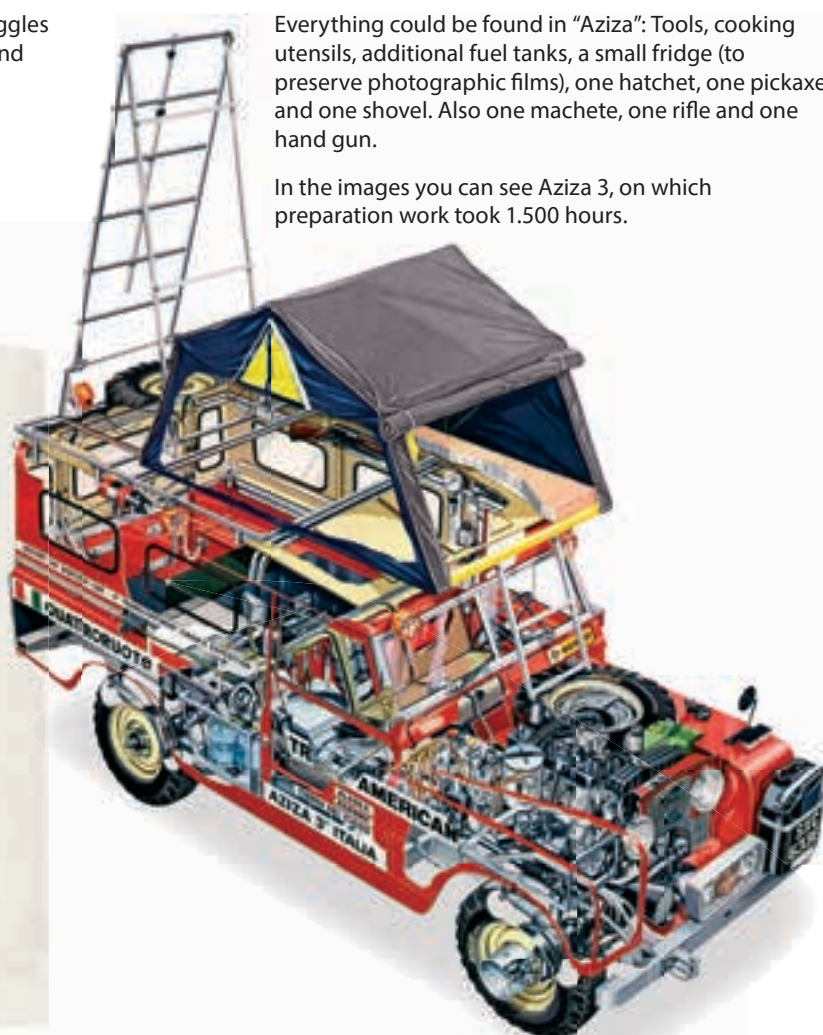
In the images you can see Aziza 3, on which preparation work took 1.500 hours.



Nino Cirani published several photojournalist reports in the most prestigious magazines. In 1973, he published his experiences "The Car Rally; How, Where, When" (Domus Publishers - "Il raid automobilistico. Come, dove, quando") a handbook full of suggestions, explanations and drawings to prepare for an adventure raid in the best possible way.

The equipment was prepared with the utmost care: including his Land Rover, where all the mechanical components and tanks were protected by means of metal plates, fabricated and modified by himself in the machine shop of his friend Amedeo Gaiani in Milan.

In the book, Cirani describes at great length how he used to prepare his car and the equipment required for the expedition or rally: The roof tent is defined as decidedly better than any traditional product.







A sand storm caught us off our guard. We could no longer see anything and when, finally, the wind stopped blowing, we had to clear Aziza that was almost covered with sand. It had been a hard, very hard journey, but now, in my memory, it remains the most beautiful I have ever made.

One day, in the desert of Nubia, on the track to Abu Simbel, I crossed an enormous truck of the Egyptian army. The soldier, who was driving, looked and smiled at my Land Rover and said "aziza", which, in the Arab language, means "nice" and is an adjective used for young, handsome and attractive girls. In this way is born the series of Azizas.





**"HERE CROSS-COUNTRY DRIVING IS COMPLETELY IMPOSSIBLE. FOR 34 DAYS, WE TRAVELLED ON MULE TRACKS AT AN ALTITUDE OF 4.000 METRES, ALWAYS ON THE EDGE OF THE PRECIPICE. THE SMALLEST MISTAKE WOULD HAVE BEEN FATAL".**

Alaska - Land of Fire: it is the longest route that one can make on the Earth. It is a ride from the extreme North to the extreme South, a journey across all the latitudes, from the ice of the Arctic to the ice of the Antarctic, through all the climates, from the arctic to the equator, across all altitudes, from 80 metres below sea level, in the Valley of Death to 5.000 metres in Peru and Bolivia. By force of zigzagging in and out the different countries, we had to undergo a good 64 customs checks. Also this, I think, is a record for a single journey.



### **Great Undertakings on a Reduced Scale**

In 1970, the adventures of Nino Cirani aroused the interest of Mebetoys, which reproduced Aziza on a 1:43 scale, equipping it not only with doors, bonnet and hatchback that could be opened, but also with all the relevant equipment fitted. On its roof, beside the additional spare wheel, there is the Air-Camping tent. The Land Rover of the "Trans-American Tour" is still in demand by customers today, and is available in the BBurago catalogue both on a 1:43 and on a 1:24 scale.





Nevertheless what we found in the hinterland re-paid us for the dangers, for the efforts, for the fords we crossed, and for getting stuck in the mud: Titicaca Lake, the Urus Indians on their floating islands, the Indians of the Andes in Peru, the very high mountains covered with ice, the huge expanse of the “puna” of Bolivia, empty and swept by the wind. And the colours of the Indians, the colours of the landscape and the colours of the wide skies.



# TECHNICAL

## COMFORT always holds the first place

**FABRICS** – The roof and sides are made of a heavy duty single skin 420g/m<sup>2</sup>, 50% cotton and 50% acrylic fabric, which is water proof, breathable and rot-proof.

This fabric has several advantages: it's extremely breathable, so inside the tent is fresh and airy, unlike plastic-coated or resin-treated fabrics, which are non-breathable and therefore create lots of condensation, which is the main cause of moulds.

However the breathable nature of the fabric doesn't reduce it's impermeability to rain: on contact with water, the fabric weave swells and thickens; where sewing has occurred, the holes created by the needles swell and seal as does the thread used for stitching, whereas in plastic-coated fabrics, some permeable holes will still remain.

**YARNS** – A widely used, high-technology yarn, made of two different fibres: pure cotton outside, to swell on contact with water and fill the holes made by the needle plus a synthetic fibre core is used on the inside of the yarn to obtain a high strength seam.

**COLOURS** – The colours used since 1959, are for very practical reasons, including reducing the amount of light filtering through, by using medium grey on the roofs and dark blue for the sides.

**PLATFORM BOARDS** – The boards used for the tent base are made of a poplar plywood, which, thanks to its long fibres, is very resilient and hard-wearing. This 12 mm thick plywood has been developed for this particular application; the different layers are bonded together by the cross-overlapping method, following the wood grain to produce the products unique features.

The Air-Camping procedure includes, veneering both outside and inside of the tent base, by applying two 0.3 mm thick Silver-Quartz CHPL (Casework with High Pressure Laminate Finish) laminated sheets. The plywood, therefore, has a double protection: it is waterproof and water-repellent both outside and inside, does not absorb humidity, will not warp and prevents the formation of harmful mould.

**METAL COMPONENTS** – Both steel and aluminium are used in a combination that achieves a tent with strength, high resistance to wear and the elements, yet still maintain a light overall weight. The metal elements used are first quality; being hot-galvanized during the mills' rolling process directly in the factory.

**LADDER** – Made of aluminium with steel stiffeners and extendable up to 2.30 metres. Quick release spring clips allow easy adjustment to the height of the ladder, and also keep it firmly locked in place on the tent base when in transit. With the tent in use, an automatic blocking mechanism prevents the ladder from slipping when being climbed, and allows for using the tent on uneven ground and smooth or slippery asphalts or pavements.



Video  
Air-Camping  
Tech-TV

### STANDARD SET-UP

Opening and entrance on the side of the vehicle.  
This configuration is available for all models.

### AC/01 AIR-CAMPING SMALL

**Sleeps two adults**

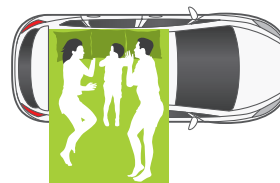
Sizes: 130 x 220 cm (when closed: 130 x 110 x h 35 cm)



### AC/02 AIR-CAMPING MEDIUM

**Sleeps two adults + 1 child**

Sizes: 160 x 220 cm (when closed: 160 x 110 x h 35 cm)



### AC/03 AIR-CAMPING LARGE

**Sleeps two adults + 2 children**

Sizes: 180 x 220 cm (when closed: 180 x 110 x h 35 cm)



### EXPLORER SET-UP

Set-up with opening and entrance on the rear of the vehicle. This configuration is particularly suitable for Land Rovers and 4x4s.  
Option available for SMALL and MEDIUM.

### ACE/01 SMALL



### ACE/02 MEDIUM

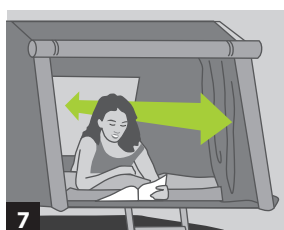
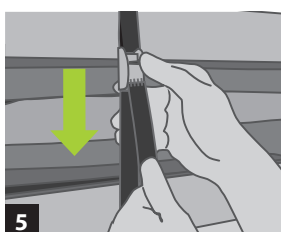
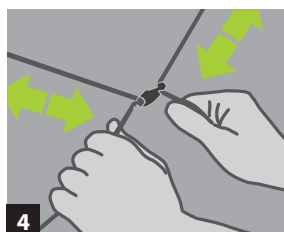
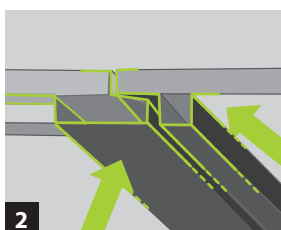
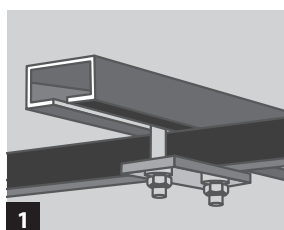
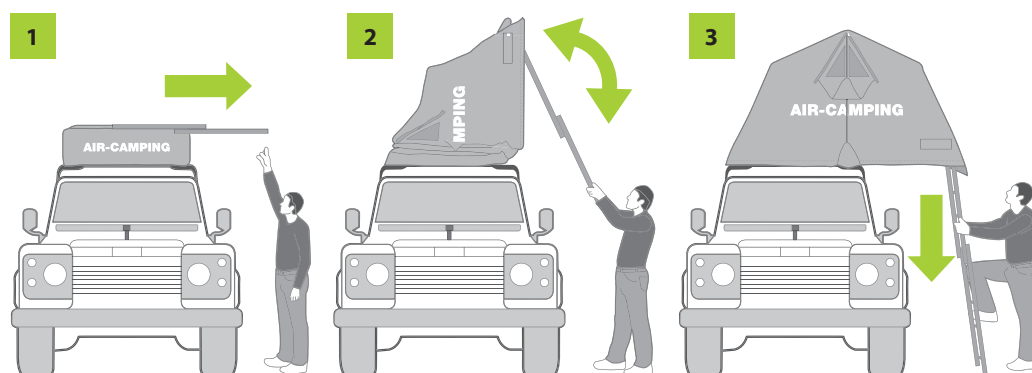






## OPENING AND CLOSING

The automatic pop-up, swivel opening is the main reason for the Air-Campings' success: since 1959, it has remained unchanged, faithful to its original design and well known simplicity. Once you have removed the cover, the tent opens in three seconds, simply by pulling down and lowering the ladder. Nothing further is required!



**1** - Two mounting channels on the underside of the tent base, plus locking clamps, enable a quick installation of the tent on any vehicles roof bars or rack, they also allow you to customize the opening system: Standard or Explorer. The whole installation can be completed without further drilling or modification.

**2** - Exclusive hinge system allowing the two halves of the tent base to "lock" together.

**3** - Ladder anti-slip mechanism.

**4** - The removable inner elastic cords (supplied) make folding the fabric much simpler.

**5** - Two attached cam buckle straps keep the tent closed and compact, when sleeping bags or blankets have been left inside the tent.

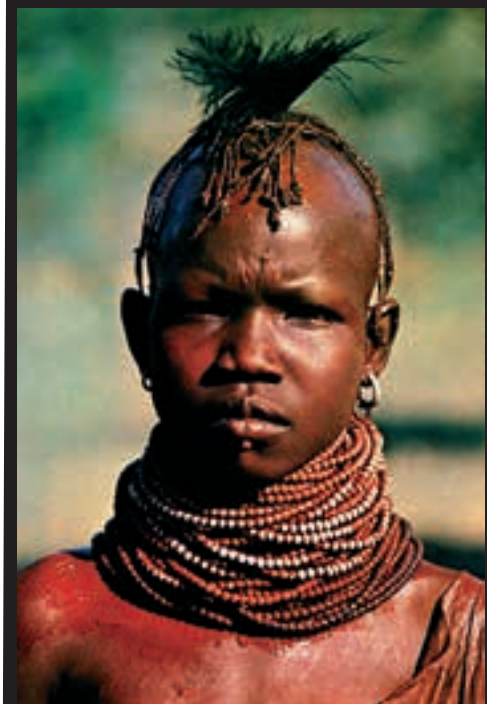
**6** - The poles supplied create a practical awning.

**7** - Double opening.



## 1.200 nights in the Air-Camping tent of the Dragesco brothers.

Two brothers, Alain and Eric Dragesco, from Paris are professional photographers, have confirmed sleeping 1.200 nights in their Air-Camping tent in the space of 5 years. In 1988, when returning from a long journey in Pakistan, they wrote «This tent is comfortable and safe, a really outstanding tent, it has been very serviceable for us».





THERE ARE PEOPLE WHO DREAM OF TRAVELLING, AND PEOPLE WHO MAKE DREAM TRAVELS. ALLOW YOURSELF THE BIGGEST LUXURY IN THE WORLD: FREEDOM.



The tent of the Dragesco brothers that is mounted on a small military luggage trailer. Pass of Baltistan, Pakistan, at an altitude of 3.500 m.





**Target: Africa.**

Francesco Delogu and five friends were members of a sport and scientific rally made in 1987 through Tunisia, Algeria, Nigeria, Cameroon, Central African Republic, Zaire, Rwanda, Tanzania and Kenya.

In three months, driving two Toyota Land Cruisers, they covered 13.000 km of roads, tracks and cross-country trails. Their hotel room has always been their Air-Camping tent.









**THERE ARE NO FOREIGN LANDS,**





**JUST FOREIGN TRAVELLERS**



# OVERLAND®

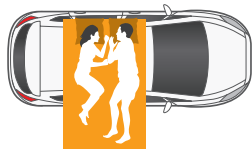
## The adventure CONTINUES

Just when you believe you've seen everything it's then the biggest surprises come along. With an extraordinary background and a series of innovations, Overland represents the absolute evolution of its class. Identical to the everlasting model of Nino Cirani but with new appealing colours, this roof tent offers travellers the perfect style to suit all requirements for all adventures. History changes appearances to meet new trends and Overland distinguishes itself here too. Not only for it's tried and tested, ingenious, functional and rigorously windproof design, but also for its brand identity which outclasses any others in customer appreciation and sales. As with the whole Autohome range, Overland typifies and perseveres ground breaking innovations, such as the exclusive Automatic Ladder Security System (ALSS) that allows for secure, stable use on any ground conditions, even on the most slippery of asphalt roads. The innovative design characterizes its fabrics as well (certified at 420 grams) and assures both excellent breathability and waterproofing qualities, particularly suitable for harsh outdoor use. Available in three colour combinations: Grey and Anthracite in the Carbon Model, Grey and Burgundy in the Bordeaux Model and Grey and Beige (Sand) in the Safari Model.



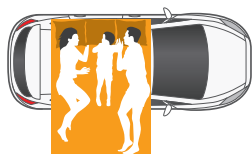
Video Overland Tech-TV

## STANDARD



### SMALL

Art. OLBX/01 - OLC/01 - OLS/01  
Overland Standard Small:  
recommended for 2 adults.



### MEDIUM

Art. OLBX/02 - OLC/02 - OLS/02  
Overland Standard Medium:  
recommended for 2 adults +  
1 child.



### LARGE

Art. OLBX/03 - OLC/03 - OLS/03  
Overland Standard Large:  
recommended for  
2 adults + 2 children.

## EXPLORER



### SMALL

Art. OLBXE/01 - OLC/01 - OLSE/01  
Overland Explorer Small:  
recommended for 2 adults.

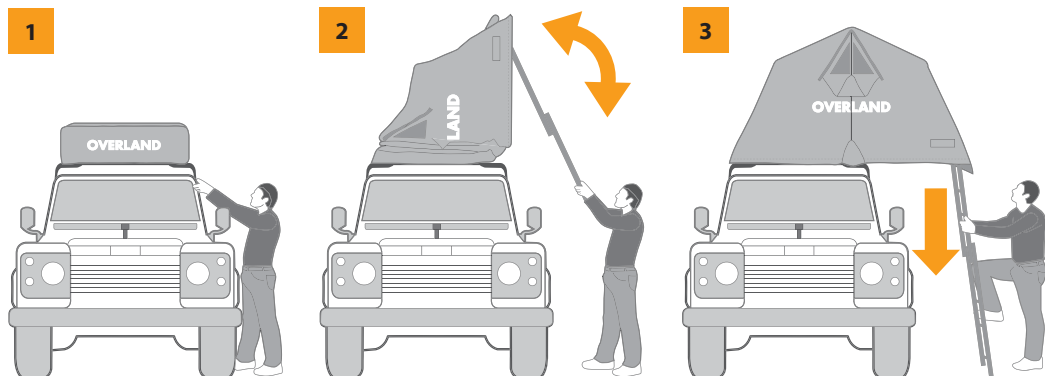


### MEDIUM

Art. OLBXE/02 - OLC/02 - OLSE/02  
Overland Explorer Medium:  
recommended for 2 adults + 1 child.









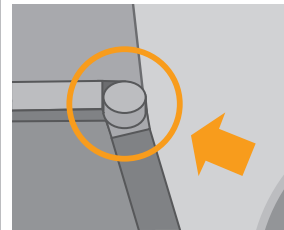
# TECHNICAL

## Technical LAST GENERATION'S solutions

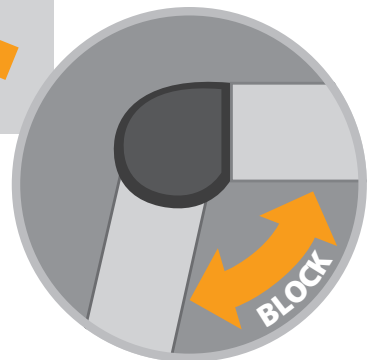
The several technical Overland's innovations create a new quality and comfort which have never been achieved by tents using side closings.

Autohome has completely revised/redesigned the basic idea of roof tents by creating an entirely new type of structure/frame.

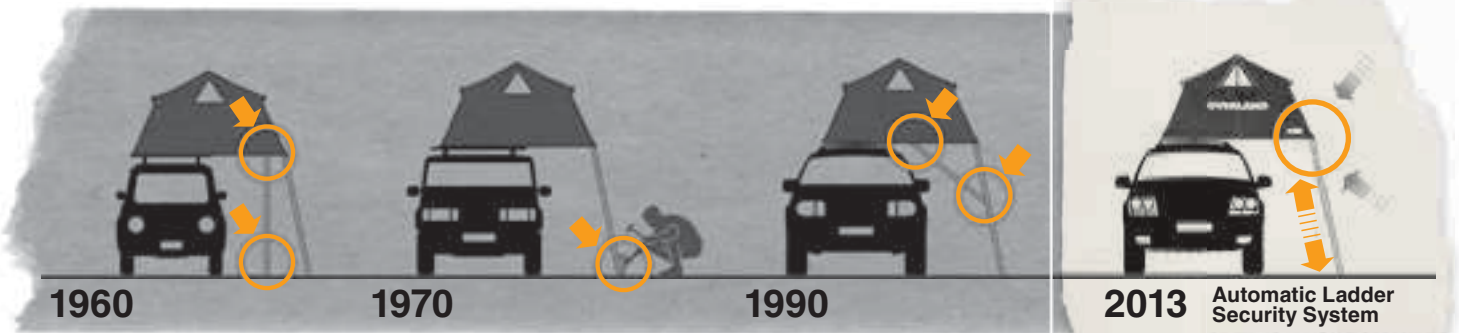
The indestructible frame incorporates brackets for the attachment of the access ladder. While the unique Autohome Automatic Ladder Security System (ALSS) prevents the ladder from slipping, the spring loaded 'locking device' ensures the tent remains stable under any conditions.



**ALSS**  
TOP SECURITY



## AUTOMATIC LADDER SECURITY SYSTEM: HOW INNOVATION IS CREATED.



1960  
The stability of the structure is assured by very big support bars.

1970  
The ladder is fixed by pegs; this solution is not good on hard or slippery ground.

1990  
The structure is equipped with shorter or longer ladder tie bars.

2013  
Self supporting structure which incorporates the Automatic Ladder Security System (ALSS) is created!



**1** - The reinforced aluminium ladder can easily be extended from 110cm up to 225cm making it suitable for any vehicle.

**2** - The ladder has a simple to operate mechanism allowing full adjustment to be carried out even in total darkness.

**3** - The strong structure consists of special profiles being incorporated in the frame, which give the structure the highest transversal rigidity.

**4** - Small packed size, with tight fitting travel over cover, ensures stability and reduced noise.

**5** - To protect against cold, wind and sand, a special zip fastener, can be closed at the base of the door.

**6** - Support bars hold open the doors to create awnings.

**7** - The windows are equipped with drip, mosquito net and double roll up, roll down protection curtains to be adjusted from inside through strings and zip fasteners: protection from wind and rain.

**8** - The plates on the sides better fix the fabric at the base of the tent.

**9** - The large openings are equipped with mosquito nets that can be closed by double slide zip fasteners.

**10** - The outer of the bottom shell has been given a plastic coating, for increased longevity, while the mattress inside, sits in an insulating protective cover.

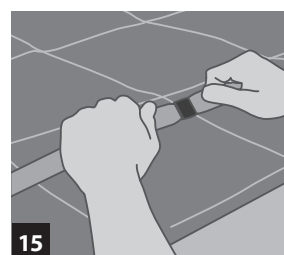
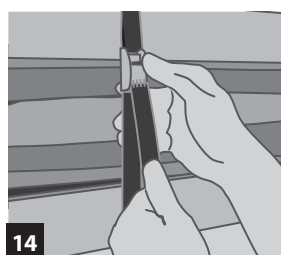
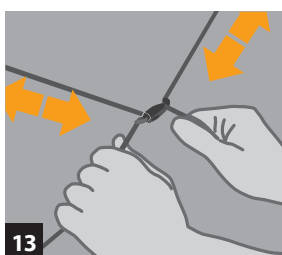
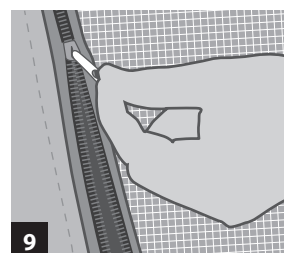
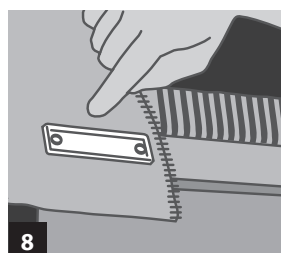
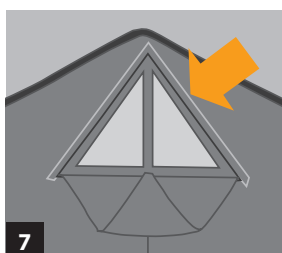
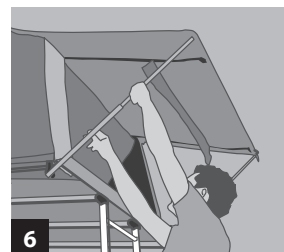
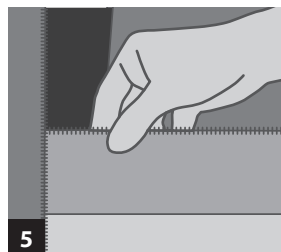
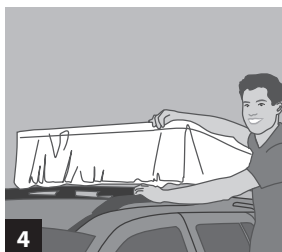
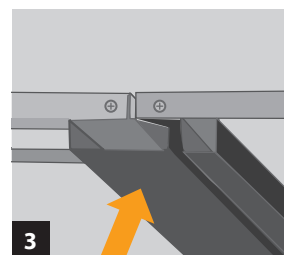
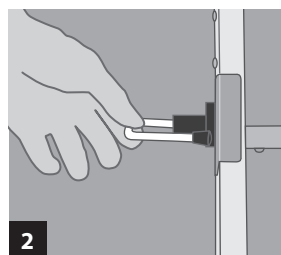
**11** - Each tent has two large storage pockets.

**12** - The roof stakes are equipped with condensate proof covering: no need of additional sheets or inner cabins.

**13** - Elastic tensioning straps inside the tent help to fold the fabric into place when closing the tent, particularly useful on high vehicles.

**14** - Compression straps ensure the tent and bedding remain in place whilst travelling.

**15** - Elastic strap, used to hold bedding in place when packing down the tent.





# Choose your COLOUR

All the Overland models are available in three colour combination: Carbon, Bordeaux and Safari.

By varying the configuration of the "C" guide mounting rails, the tent can be mounted in two ways. Standard mounting, opening to the side of the vehicle, or Explorer mounting opening to the front or rear of the vehicle. With the Explorer mounting being particularly suitable for off-road vehicles.



## MOUNTING STANDARD







## MOUNTING EXPLORER

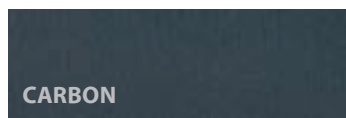
High quality 420g fabrics, are both waterproof and breathable due to their 50% cotton 50% acrylic construction.

ROOF TEXTILE:



**CARBON**

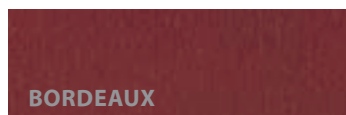
SIDE TEXTILE:



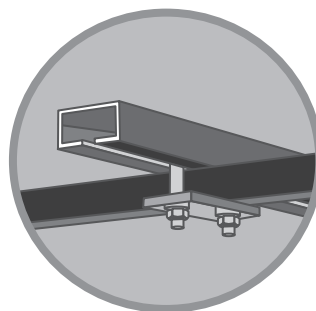
**CARBON**



**SAFARI**



**BORDEAUX**



Unique "C" guides and clamps allow for easy installation and removal of the tent from the vehicle. TÜV certified quality and safety



# OVERLAND®

## ACCESSORIES

accessories  
for all  
REQUIREMENTS



Anodised Aluminium Poles



### INDEPENDENT VERANDAH (Art. OL/04A)

Dimensions: cm 200 x 200 x h240.

According to our testers' experience, we have understood that also Overland verandah shall be independent.

Living & sleeping areas are communicating but at the same time separate rooms: it is the best solution to get a freedom of movement and at the same time a standing point of reference where tables, chairs, barbecue, food and drinks, etc. ... are kept.

Should the standing time be longer, the tent becomes a well-structured, comfortable and safe module, (art OL/06A) to go camping in a traditional way; this is possible thanks to its ground feet.





#### **CHANGING ROOM** Carbon e Bordeaux

(Art OLC/07A for cars) - (Art OLC/08A for off-road vehicles and vans)

Dimensions cm: Small 130 x 110 - Medium 160 x 110 - Large 180 x 110

Suitable for people, who "never stop": practical and lightweight accessory, it can also be used as a small verandah thanks to its zip fasteners.



#### **FEET** (Art. OL/06A)

Four strong folding feet keep the tent raised some 25cm off the ground protecting the base of the tent from water, condensation and insects.



#### **SOLAR REFLECTIVE AND WINTER HOOD** (Art. OL/05A)

Made of resin bonded nylon fibre and aluminium powder. Excellent protection from the burning effect of the sun's rays, and equally useful for extra insulation in colder conditions. Quickly attached, by Velcro strips, and removed, it can also provide additional protection in the most extreme of conditions. Can be left in situ when closing the tent.





**WHEREVER YOU GO, GO WITH**





**ALL YOUR HEART**



# OVERZONE®

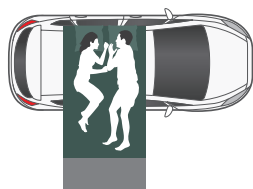
## A RANGE of success

The Overzone can trace its ancestry through a pedigree range of tents. As an evolution of the successful Overland, it's the largest model of tent in the "fold over" range. Compared to the Overland, there's more internal space with total protection from the elements, including the main entrance doorway. The Overzone meets the most demanding requirements of the adventure traveller offering total privacy and freedom. At the heart of the Overzone is a strong, lightweight aluminium frame, encased in breathable, water-proof 420g heavy duty cotton fabric in keeping with the world renowned Autohome tradition, whilst creating a new era of user friendly features. The striking appearance is due to a well-proportioned, streamlined design, making the Overzone a perfect solution for people wanting to explore imposing landscapes, where adventures occur every day.



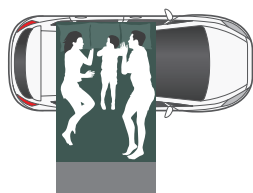
Video Overzone Tech-TV

## STANDARD MOUNTING



### SMALL

Art. OZ/01  
Overzone Standard Small:  
recommended for 2 adults.



### MEDIUM

Art. OZ/02  
Overzone Standard Medium:  
recommended for 2 adults +  
1 child.

## EXPLORER MOUNTING



### SMALL

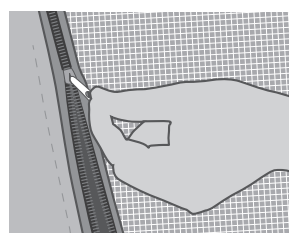
Art. OZE/01  
Overzone Explorer Small:  
recommended for  
2 adults.



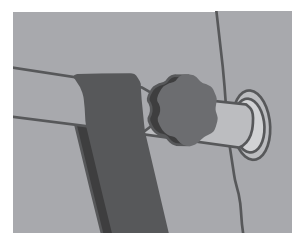
### MEDIUM

Art. OZE/02  
Overzone Explorer Medium:  
recommended for  
2 adults + 1 child.

The Overzone has two mounting options, Standard and Explorer. Standard Option - opening over the side of the vehicle, particularly useful for vehicles with a lifting tailgate. Explorer Option - popular with 4x4 owners. The tent offers shade or shelter above the rear door.



The large openings are equipped with mosquito nets that can be closed by double slide zip fasteners.



Adjustable tensioning bar, in combination with straps to maintain rigidity and stability at the entrance.



Multi-use hooks to organise your daily essentials.



Internal and external window covers, both of which can be opened and closed from inside the tent. Vertical opening external window covers eliminate any sail effect on the tent material.





## ACCESSORIES

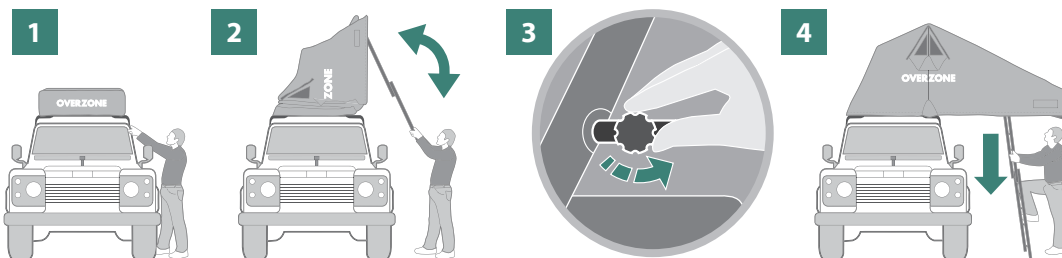


### DAY ROOM

Cars & trailers: art. OZ/04A (Small cm 130x180, Medium cm 160x180)

4x4 & campers: art. OZ/05A (Small cm 130x180, Medium cm 160x180)

Accessories are made from the same quality 420g fabric as the Overzone. The Day Room consists of 4 panels with zip fastener doors. Each side has one window; one a fixed transparent window, and one with mosquito mesh, both have 'curtains' for privacy. To use the end panel as an extended awning two telescopic poles are supplied. A practical, easy to use non-bulky accessory, with a multitude of uses such as kitchen, dressing area, toilet tent or shower room.



### WINTER HOOD

(Art. OZ/03A)

Traditional hood made from aluminised nylon to offer increased protection from sun rays and cold conditions.

SAFARI

OLIVE





**TULUM BEACH,**





**MEXICO: WANDER WITH ME**



# TRADITION meets innovation

Overcamp represents the latest concept for today's camping needs. Great attention to detail, the attractive colours and design, the reassuring tough fabric which is waterproof, strong outer structure smooth to the touch are just some of the outstanding and eye-catching features of Overcamp.

Overcamp offers additional storage capacity on roof rack, allowing you to carry your sporting equipment easily: your bicycle, canoe, surfboard, hand glider or other accessories for your favourite sport. Another feature is the unique Double-up system which allows you to obtain twice the normal living space by fitting two tents on one roof.

You can carry two Overcamp even on the smallest of cars and obtain four places (2+2) or eight places on large vehicles (4+4) providing two totally independent bedrooms. Overcamp is the unrivalled choice for adventure-going people.



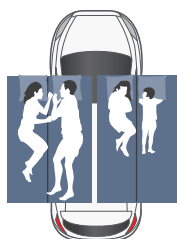
## SMALL

Overcamp Small:  
Art. OGY/01  
Recommended for two adults.  
Central positioning:  
the tent will occupy the car roof space.  
Open: 130 x 200 x 100 cm high  
Closed: 65 x 200 x 35 cm high



## MEDIUM

Overcamp Medium:  
Art. OGY/02  
Recommended for two adults and two children.  
Central positioning:  
the tent will occupy the car roof space.  
Open: 180 x 200 x 115 cm high  
Closed: 90 x 200 x 35 cm high



## DOUBLE UP

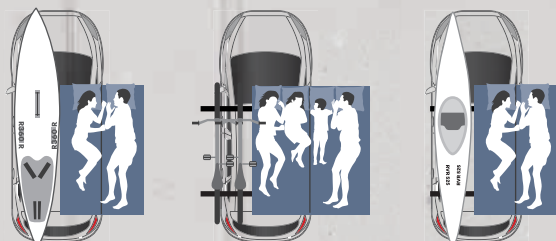
Double Up  
Side positioning: the tent will occupy only half of the car roof space.  
You can fit: Small + Small, Medium + Small  
or Medium + Medium on large vehicle



## SURF, BIKE, KAYAK

**Overhanging positioning: the tent occupies one half of the vehicle's roof.**

The 2 "C" shaped mounting channels in the tent base and 4 clamps, supplied, allow the user to position the tent on the vehicle roof according to their needs and requirements. The exclusive hinge mechanism allows a safe and secure overhang to one half of the tent, allowing bikes, surfboards or other sports and leisure equipment to remain in place on the other half of the vehicle's roof bars, always ready for use.







GRAY



BLUE



# TECHNICAL

## SMALL while in transit, SPACIOUS when open

- 1 - Fabric 50% cotton and 50% acrylic. Waterproof, tear and mould resistant, keeps its shape, offers great ventilation and doesn't retain the heat.
- 2 - Multi-layer base. Long fibre wood coated on both sides with plastic material, it is waterproof, mould resistant and doesn't lose its shape.
- 3 - Thick foam mattress, removable cover, with two or four pillows. Elastic under-mattress for extra protection.
- 4 - Strong self-contained adjustable telescopic ladder.
- 5 - Windows fitted with fine mesh mosquito nets and zip fasteners to create useful shutters.
- 6 - A guy rope enables you to open the windows from inside.
- 7 - Water diversion system to stop water seeping through.
- 8 - Two inner storage pockets.
- 9 - Two air inlets with velcro closure
- 10 - Mosquito mesh on both sides, that can be rolled-up or closed by simple zip fasteners.
- 11 - Large openings that can be closed by two vertical zip fasteners and one zip fastener on the base to protect from draughts. Two support bars hold open the doors to create roomy awnings.
- 12 - Exclusive self-guiding system developed to withstand different stresses allowing a long life.



Video  
Overcamp  
Tech-TV



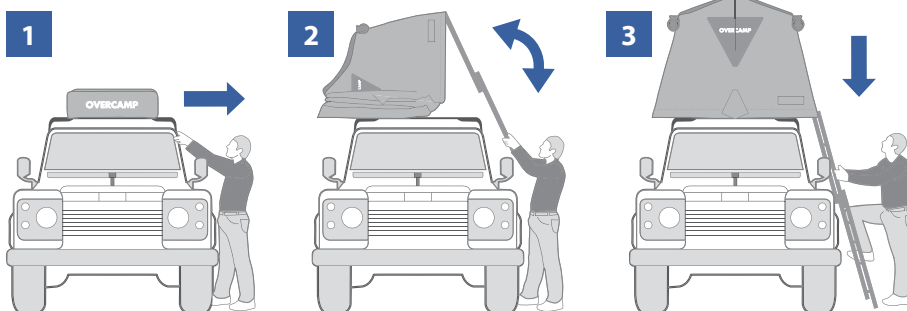




**1** - When closed the tent looks like a small roof box. The over cover is secured by a continuous elastic cord which is very easy to remove and being made of strong PVC material, it offers complete protection while travelling.

**2** - Quick and easy book style opening. By just pushing down on extended ladder, the tent will open and in an effortless instant your bed is ready.

**3** - A comfortable and safe bed totally raised from the floor.





# ACCESSORIES

## Practical easy to use accessories

Self contained, easy and quick to assemble, it makes your holiday, weekend or adventure trip even more comfortable without impeding your freedom of movement.

Each Overcamp model can be supplied with:

- **The Verandah**, totally self-contained for a comfortable stay.
- **Winter hood**, made of nylon fibre, it is an invaluable protection against the cold and wind.
- **Feet**, for placing Overcamp on the floor.
- **Awning**, very useful for a short break.
- **Double awning**, a single large awning to place on top of Overcamp when combined together.

Other accessories: roof-bars, space saving garage storing rack, PVC mats, bike and surf/kayak racks.



**Anodised Aluminium Poles**

Triangles of series with zip to attach the verandah to Overcamp on the floor, another option for a really comfortable holiday.



### **VERANDAH** (Art. O/03A)

Verandah (200 x 200 x 240 cm high). Quick and easy to assemble.

It is very versatile with openings fitted with two-way zip fasteners on all sides.

Used with Overcamp, it transforms it into a traditional camping tent with day and night areas.





#### **SELF-CONTAINED VERANDAH (Art. O/03A)**

A spacious, self-contained strong structure, which allows you to move your car whenever you want. You are free to drive around and leave your equipment protected from the weather.

#### **FEET (Art. O/06A)**

Four strong feet to enable you to place Overcamp on the floor if desired. Approximately 25 cm high, they keep you a safe distance from humidity, water and insects. Foldable and clutter free, they can remain attached at the base while in transit.



#### **AWNING (Art. O/05A)**

A large and functional awning attached to Overcamp by means of a zip fastener, its self-contained strong structure provides extra protection from the sun and rain.

Roof: 200 x 170 cm

Length 4 metres approx.



#### **WINTER HOOD (Art. O/08A)**

Made of resin blonded nylon fibre and aluminium powder, it is an invaluable protection against the cold and wind. Extremely useful for travellers going North. Very quick and easy to fit, it can be left on even when Overcamp is closed.



# MONTAGE System

The exclusive Autohome security system allows all tents to be used on any vehicle: small cars, off-road vehicles, station-wagons, MPV's (or people carriers), camper vans, and pick-up trucks...

A universal, quick attachment system, allows you to position the tent safely in any position, with no risk of damage or modifications to the body of the vehicle.

Various fixing kits are available to suit.

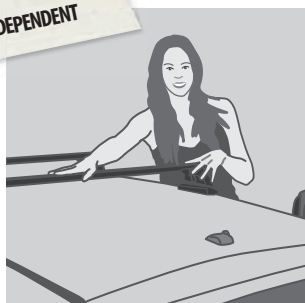


Video  
Universal  
System Tech-TV



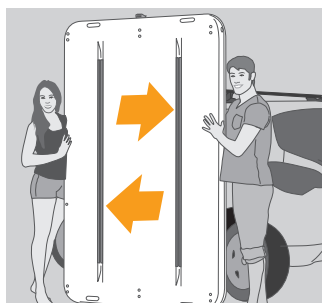
AUTOHOME QUALITY CERTIFIED

INDEPENDENT



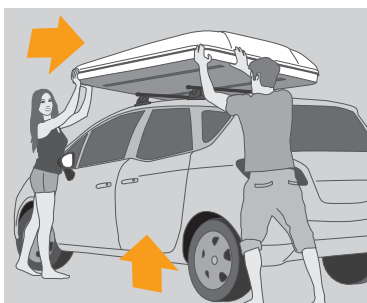
## 1<sup>st</sup> Advantage:

All tents are fully independent for easy installation on the car roof.



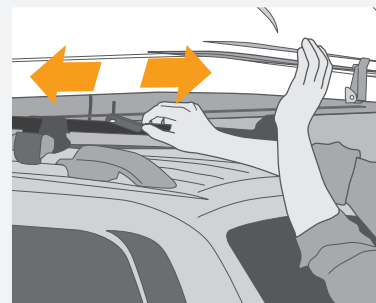
## 2<sup>nd</sup> Advantage:

The C-shaped steel rails integrated into the bases of all Autohome models strengthen the structure and make it possible to fix the tent to the roof bars by means of special clamps.



## 3<sup>rd</sup> Advantage:

Just two people (standing beside the car) can easily lift the tent and position it on the roof bars without risk to the bodywork.



## 4<sup>th</sup> Advantage:

The standard clamps slide along the C-shaped rails to fix the tent in the desired position. This position varies depending on the type of car, to be used as a carryall or for best appearance.



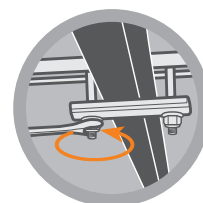
The tent bases must not be drilled for fixing onto the roof bars.



No holes are to be drilled in the roof bars to secure the tent. This operation is prohibited by current safety regulations. It is not permitted to make changes to the roof rack.



4 clamps are provided as standard for simple, easy mounting according to the rules.



Universal System Autohome is a mounting system according to the standards, certified by TÜV - ID: 000024461. Beware of imitations.



An example of a roof rack for motor cars without water channels.



Connection for off-road vehicles or motor cars with water channels.



Attachment bars for motor cars with fitted rails.



Special Order: Roof Bars or Expedition Roof Racks available in Steel or Aluminium.



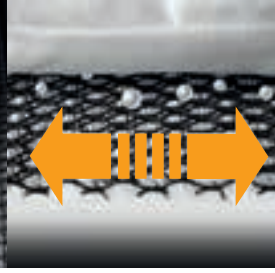
# UNIVERSAL ACCESSORIES



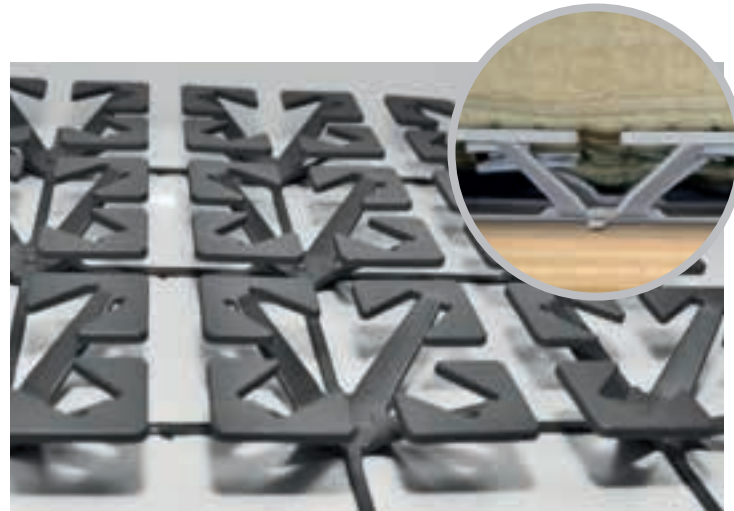
**SPACE SAVING KIT** (art. K/15A)  
Garage accessory: pulley system that allows all models of roof tents to be raised from the vehicle for storage.



**AIR CIRCULATION SYSTEM** (art. ACS-3D)  
New accessory to be positioned underneath the mattress. Made from a lightweight (450g/m<sup>2</sup>) woven polypropylene it's semi elastic and allows a free flow of air between tent base and mattress, increasing ventilation and reducing the chance of condensation. The lightweight mesh construction is compression resistant (1 ton/m<sup>2</sup>) and is available in three sizes to fit all models of roof tent: Small (cm 120x210), Medium (cm 140x210) and Large (cm 160x210).



**ROLLING TOP**  
Art. R/TOP - S cm 180x180  
Art. R/TOP - M cm 220x225  
Awning with built in supporting legs that's easily installed to roof racks. Practical and always ready to use, it creates a simple and effective shelter. Also indicated for journeys and safaris.



**ORTHOPAEDIC SPRINGS** (Art. O/S)  
Spring base to apply under the mattress for added comfort. Easy installation ensures an orthopaedic support to the whole body. A modular lightweight construction adaptable to any size of tent.

**NEW**



**COMPASS AWNING** (Art. TC/01)  
Compass 220 cm (length of bag)  
The light and multifunctional compass awning. A simple solution for off-road vehicles and minivans to protect yourself from the sun. The awning opens out 270° around the vehicle and is extremely easy to put up and take down.

**NEW**

# AUTOHOME RANGE PERFORMANCE

Test results have been obtained from inspectors using a sample method survey on tents delivered during 2016.

	MAGGIOLINA					COLUMBUS				TEXTILE RANGE			
	CARBON FIBER	AIRLANDER	EXTREME	GRAND TOUR	AIRTOP	COLUMBUS	VARIANT	CARBON FIBER	X-LONG	A-C	OVERLAND	OVERZONE	OVERCAMP
OPENING SPEED	●●	●●	●●	●●	●●●	●●●●	●●●●	●●●●	●●●●	●	●	●	●
ACCOMMODATION AREA	●●	●●	●●	●●	●●	●●●	●●●	●●●	●●●●	●●●	●●●	●●●●	●●
CAPACITY OF SHELLS	●●	●●	●●	●●●	●●●	●●	●●	●●	●●	—	—	—	—
TRANSPORT (BIKE, SURFBOARD, ETC...)	—	—	●●	●●	—	—	●	—	—	●●	●●	●●	●●●
MAXIMUM LOAD AND THE SHELLS	—	—	25 kg	15 kg	—	—	15 kg	—	—	—	—	—	—
AERODYNAMICS WHILE TRAVELLING	●●●	●●●	●●	●●●	●●●	●●●	●●●	●●●	●●●	●	●	●	●
STABILITY IN STRONG WINDS	●●●●	●●●●	●●●●	●●●●	●●	●●	●●	●●	●●	●	●	●	●
INSULATION AGAINST HEAT	●●●	●●●	●●●	●●●	●●●	●●●	●●●	●●●	●●●	●●	●●	●●	●●
INSULATION AGAINST COLD	●●●	●●●	●●●	●●●	●●●	●●●	●●●	●●●	●●●	●	●	●	●
DURABILITY IN OFF-ROAD SITUATIONS	●●●	●●●	●●●	●●●	●●●	●●●	●●●	●●●	●●●	●●●	●●●	●●●	●●●
FABRIC FEATURES	●●● DRALON	●●● DRALON	●●● DRALON	●●● DRALON	●●● DRALON	●●● AIRTEX	●●● AIRTEX	●●● AIRTEX	●●● AIRTEX	●●● K 200	●●● K 200	●●● K 200	●●● K 200
BREATHABLE FABRIC	●●●	●●●	●●●	●●●	●●●	●●	●●	●●	●●	●●●	●●●	●●●	●●●
TECHNOLOGICAL INNOVATION	●●●●	●●	●●●	●●●	●●●	●●	●●●	●●●●	●●●●	●●	●●	●●	●●
EVALUATION: ● = GOOD ●● = VERY GOOD ●●● = EXCELLENT ●●●● = SUPER													



**7MML “return to the centre”**

**A dream to keep you travelling with head and heart**

The idea of 7MML “return to the centre” is simple, strong and concrete.  
To do something lasting, something that enables us photographers,  
video-makers and writers to help bring on new young talent  
in countries where art is still studied only by the privileged few.

The 7milamigliamentano [Seven thousand miles away] Cultural Association  
Giuliano Radici - Project Leadership

**7MILAMIGLIALONTANO.COM**







# REVIEW



**Martin Mikulenčák** - Extreme adventurer - member of Hummer Island Expedition - Vatnayokull Glacier (Iceland)  
 «The biggest glacier in Europe, is in Iceland. We were afraid of suffering from the cold and the wind blowing in gusts, but thanks to both the Winter Hood on the roof tent combined with the strength of the tent structure we had absolutely no problem. Other kinds of tent could surely not be so reliable!».



**Desert Scorpion** - The winning team  
 From Saharan dunes to Australian deserts, from Iceland geysers to Himalayan peaks: the "scorpions" are one of the most active groups visiting foreign countries. They are present as technical support groups at important world competitions, such as Rain Forest Challenge in Malaysia; they have done six Saharan expeditions plus many other different places visited throughout the whole world.



**Akis Temperidis, Voula Netou** - Superstar travellers  
 "It's us again! Just to tell you that our life is great with our Maggiolina. We've actually slept more than one year (that's more than 300 nights out of 475 total days of our trip) in there and we still enjoy it. Greetings from Bangkok, Thailand."



**Carsten Averkamp** - Project Manager  
**Lutz Rathmann** - Lead Instructor

Tour leaders and international selectors affiliated to the most important expeditions.  
 Land Rover Experience is aimed at training off-road drivers to enable them to discover exotic regions, far from the usual tourist routes. No matter what the circumstances or conditions, with Autohome, one is certain to get the best results!



**Sonja Vietto Ramus** - **Ténéré 2000** - Photographer and journalist for off-road vehicle & race team magazines.  
 "Both Africa and motorcycles are my passion and my job: since 2000, I travel to North Africa to photograph cars and motorcycles competing in the most beautiful deserts of the world. I always travel with friends, in a Toyota vehicle and an Autohome tent, my passport to adventure!"



**Juerg, Angelica, Tom, Cornelia, Jean Pierre, Alexandre, Doris, Heidi, Jean Francois, Erich** - **Trans-Afrika**

"There are dreams in life it's necessary to fight for"  
 "Nine weeks throughout West Africa up to Cameroon continuing through Gabon, the two Congos, passing through Angola in to Namibia, arriving at Cape of Good Hope in South Africa".







**Silk Road - Jürg Solberger, Severin Bucher** and his team, professionals and experienced in great adventure-trips. From west to east on Marco Polo's tracks to discover history and events which left their mark on people's fortunes.



**Danilo Tapiletti**  
"For more than 25 years I have been part of the Corps de Ballet of La Scala Theatre in Milan. Now I have replaced the stages of the most famous theatres in the world with the green meadows of Mongolia and of other wild places in the planet. Thanks to the comfort of "my" Columbus tent, I do not feel homesick."



**Sfefano Pesarelli, Francesca Guazzo**  
Majestic natural landscapes, people, boundless savannas and animals have featured in this African crossing. The Ilha de Mocambique even inspired an architectural degree dissertation to protect the environmental and historical value of the region.



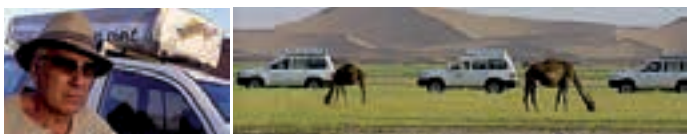
**Stephan Wermuth - Photographer e Bilia** (on the left side)  
"Dunes high like mountains during the day and a 5 star bedroom at night. I am not jealous of my Maggiolina if most of the times she is the star. On the contrary, I am proud of knowing that the pictures taken already obtained an honourable place. On the other hand, the same pictures have also been hung on the walls of my home... When you go to the ends of the earth you never know what to expect. For this reason, it is better to be properly equipped."



**Roberto Cattone - Tour leader**  
"In some rare cases and always supported by valid reasons, only a name is enough to create or make images, sensations and emotions live again. Autohome is one of these names: a box of both small and great adventures, far and close memories, comfort and rest; I can still smell the sand and hear the silence of the stars."



**Bernd Woick** and his passion for Africa  
xperienced traveller and master of survival, he involved his whole family for years in different Tours throughout Africa. Some time ago, Woick transformed his passion for adventure in a real occupation.



**Jean Pierre Steinhagen - Desert Live - Travel Organisation**  
Ex rally driver and experienced in African deserts. "We are a team of instructors with a great passion for Africa who put their know-how at the disposal of anyone who would like to discover the desert's landscapes. There are still a few places in which men have not yet been, but thanks to Autohome there will be even less."



**Patrick Galibert** - Professional photographer  
For our journeys, 2 or 3 per year, Columbus tent has become an important element for our night camp and rest: its comfort and quick opening are essential for us! After many years of raids, 4x4 vehicles have changed but Columbus tent has not! Its reliability is always at top level!





#### Jiri Chramosil - Volkswagen Touareg Club

Instructor and International Tester makes journeys all over the world. "The sun burns, the sand is lifted in dusty whirls, it is so hot that the sky mingles with the flickering desert. Still a few kilometres and you reach your destination. A precise destination does not exist, but what counts is that with your Maggiolina you always reach home, wherever you are. Maggiolina: quality in perfect style."



#### Any Soares from Cabo-Verde

##### Daniele Benzi from Milan to Iceland

"Our team is composed of artists, graphic designers and photographers who love their job and through their creativity and curiosity push us to discover new routes all the time. The magic forces dominating the reign of Nordic legends seem to have inspired our trip up to the point in which the last sun ray appears. It is wonderful!"



#### Diego Assandri, Luca Oddera - Jambo

Would you be interested in travelling through Africa by car... Give me some time, I have to think about it... The expedition "Down through Africa" (Trans- West Africa) takes its origins from the meeting between the photographer Diego Assandri and the philosopher Luca Oddera. From Tangier to Cape Town, 25.000 km throughout the whole Dark Continent to bring humanitarian aid in Congo R.D. by means of "Amici per l'Africa" Association. "Houston we have a problem: here children have never been on the moon."



#### Pierluigi Rizzato - Wildlife Photographer

Photographer for over twenty years dedicating great passion and commitment to his work in nature photography. His photographs have earned him more than 180 awards abroad, winning photographic contests in Argentina, Austria, Belgium, Canada, China, Croatia, Germany, Great Britain, India, Indonesia, Holland, Republic of San Marino, Scotland, Singapore, USA and Vietnam. Standing out amongst all these is the Grand Prix of Trierenberg, Austrian Super Circuit, the largest annual salon of photography on the planet.



#### Sergi Garcia - Tour leader

"Our target is not only to travel but also to know and interact with the different populations and cultures we meet during our journey, always offering our help and cooperation to anyone who needs it."



**Edo Bauer** - "I like hard work in a simple camp, on clear or dark nights and when the sandstorm rages the desert is terrible and merciless, but if you know it, you cannot forget it".

My work consists of writing and taking photographs of motorcycles in Africa. Deserts are nearly always my destination and the tent on my Toyota roof is my 'village all inclusive'."



**Honza Perclik - Enthusiast raider** "...It was very cold, we were in a perfectly closed room: windows, doors and any opening were totally closed and we had no humidity problem. It is really true: the tent fabric is like the highly breathable fabric of our jackets. Maggiolina is in our opinion the best product available and we recommend it absolutely! Bye Bye."



**Vanni Oddera** "Many unhappy people do not take the initiative to change their situation, because they are influenced by a sense of security, conformism and conservatism. This seems to ensure peace of mind, actually there is nothing such devastating for an adventurous soul as a secure future. The real core of the vital spirit is the passion for adventure. The joy of living rises from new experiences, and so there is no greater joy than having a constantly changing horizon, of being every day under new and different sky... That's why my tent is my home."







### The Great Escape

Autohome's Off-Road experience has been gained "in the field". During the last fifty years, explorers, reporters, photographers and adventurers have contributed to the development of tents which are of superior technical achievement as well as an extremely practical and flexible.



### Fritz Bez - Skilled traveller

"Better the devil you know than the devil you don't know". Anyone who wants to reach the ends of the earth knows that not only motorways will be waiting for him, but also many dirt roads, impenetrable forests, sandy landscapes and ancient routes. To make you feel at home anywhere in the whole world, Autohome is a great certainty.



### Enrico Caruso, Lucia Tincani - Enthusiastic travellers

"Up on a gorge with a panoramic view of a glacier, in front of an elk weighing 450 kilograms or close to a stream, there are always good reasons to stop and camp. The important thing is to have a Maggiolina. The right product for any situation. Kind regards to everybody."



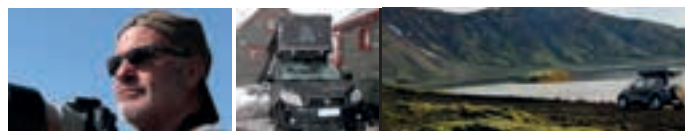
### Ronny Stavsholt [Norway] - Enthusiastic raider

"Wonderful nights are impressed in my heart. Sometimes I exaggerate a bit, but when I am at the ends of the earth, there is only a "handle" that can save me: Maggiolina is my faithful companion. I love it very much!."



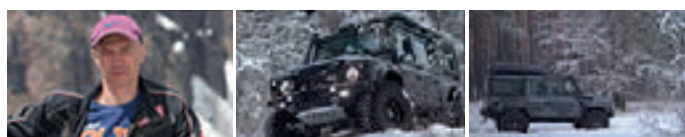
### Doris Sollberger - China

Doris Sollberger has been travelling in Africa, Asia, America and Mexico with her husband since 1986. The mother of four children she sleeps on these trips in roof tents from Autohome. As a guide and owner of ATW.CH she is not only responsible for the children, she also drives the Land Cruiser herself as well as taking care of the groups.



### Franco Della Dora

40 years ago my first trips to Europe with Air-Camping. Since then I have tried many roof top tents, similar in appearance, but the current Maggiolina Safari is far superior to the quality of materials and comfort. No problem even with wind at 70 km / h below 0 °.



### Oskars 4x4 Style

"When we participate in multiple day Heavy Duty Trophy Raids, exhaustion at the end of the day is unavoidable so having a tent that is ready for sleeping withing a minute is incredibly helpful. Our Autohome AirTop tent can be attached to the vechicles roll cage, roof rails and cargo carrier giving us the ability to use the tent on either our expedition vechicle, trophy raid vechicle or free time vechicle."



### Mauro Camisasca

Milan-Mongolia: a three-months travel, only one night in a hotel. "Sleeping in a tent gives me a feeling of endless freedom; I enjoy everything around me, the nature, the purity of the air, the sound of brook water, the air breeze... , even if my eyes are closed, I can see the stars in the sky. With my practical, comfortable and safe Columbus tent, I can feel all these emotions".





At JUCY, we stand for fun, adventure and the spirit of travelling.  
We pride ourselves on offering unique and exciting travel experiences.

[jucy.co.nz](http://jucy.co.nz)









# products COMPARISON:



## features and equipment

The tents used the world over by Tour Leaders and Explorers, for extreme car rallies and expeditions, are identical to the standard production: the same product anybody can buy.

Info:




**AUTOHOME-OFFICIAL.COM**

## MAGGIOLINA® — CARBON FIBER —

<b>SMALL</b>	<b>VOLUME</b> about 196 l*	Mod. 130 x 210 Closed h: cm 30 Open h: cm 92 Weight: about 46 kg	<b>Art. MCF/01</b> Maggiolina Carbon Fiber Small
			
<b>MEDIUM</b>	<b>VOLUME</b> about 220 l*	Mod. 145 x 210 Closed h: cm 30 Open h: cm 92 Weight: about 49 kg	<b>Art. MCF/02</b> Maggiolina Carbon Fiber Medium
			

**Includes:** carbon fibre shells for maximum resistance and lightness, waterproof and transpirant dark grey dralon textile, 2 doors with step by step opening and 2 windows, mosquito nets on all windows and doors, 4 universal clamps for attachment to roof bars, 1 opening handle, soundproof and anti-condensation roof insulation, 1 mattress with 2/3 pillows, 2 air inlets, 1 head light, 1 height adjustable alloy ladder, ladder storage bag, elastic straps assist in folding the fabric when closing.

## MAGGIOLINA® — AIRLANDER —





<b>SMALL</b>	<b>VOLUME</b> about 196 l*	Mod. 130 x 210 Closed h: cm 30 Open h: cm 92 Weight: about 56 kg	<b>Art. MB/09</b> Maggiolina Airlander Blue Small
			
<b>MEDIUM</b>	<b>VOLUME</b> about 220 l*	Mod. 145 x 210 Closed h: cm 30 Open h: cm 92 Weight: about 60 kg	<b>Art. MB/10</b> Maggiolina Airlander Blue Medium
			
<b>LARGE</b>	<b>VOLUME</b> about 260 l*	Mod. 160 x 215 Closed h: cm 30 Open h: cm 92 Weight: about 72 kg	<b>Art. MB/11</b> Maggiolina Airlander Blue Large
			

**Includes:** 4 universal clamps for attachment to roof bars, 1 opening handle, 2 doors and 2 windows, mosquito-netting on windows and doors, soundproof and anti-condensation roof insulation, 1 mattress and 2-3-4 pillows, 1 interior light, 1 height adjustable alloy ladder.

**Optional X-Long for Small and Medium:** instead of the standard 210 cm long, this version is available at 230 cm in length. The X-Long version is suitable for longer length cars, camper vans, RV's and 4x4's.

Weight: Small about 61 kg - Volume: about 210 l\*  
Weight: Medium about 66 kg - Volume: about 235 l\*

## MAGGIOLINA® — AIRLANDER PLUS —

<b>SMALL</b>	<b>VOLUME</b> about 196 l*	Mod. 130 x 210 Closed h: cm 30 Open h: cm 92 Weight: ca. 56 kg	<b>Art. MPG/09</b> Maggiolina Airlander Plus Gray Small <b>Art. MPS/09</b> Maggiolina Airlander Plus Safari Small <b>Art. MPC/09</b> Maggiolina Airlander Plus Carbon Small <b>Art. MPBS/09</b> Maggiolina Airlander Plus Black Storm Small
			
<b>MEDIUM</b>	<b>VOLUME</b> about 220 l*	Mod. 145 x 210 Closed h: cm 30 Open h: cm 92 Weight: ca. 60 kg	<b>Art. MPG/10</b> Maggiolina Airlander Plus Gray Medium <b>Art. MPS/10</b> Maggiolina Airlander Plus Safari Medium <b>Art. MPC/10</b> Maggiolina Airlander Plus Carbon Medium <b>Art. MPBS/10</b> Maggiolina Airlander Plus Black Storm Medium
			
<b>LARGE</b>	<b>VOLUME</b> about 260 l*	Mod. 160 x 215 Closed h: cm 30 Open h: cm 92 Weight: ca. 72 kg	<b>Art. MPG/11</b> Maggiolina Airlander Plus Gray Large <b>Art. MPS/11</b> Maggiolina Airlander Plus Safari Large <b>Art. MPC/11</b> Maggiolina Airlander Plus Carbon Large <b>Art. MPBS/11</b> Maggiolina Airlander Plus Black Storm Large
			
<b>NEW 360° X-LARGE</b>	<b>VOLUME</b> about 300 l*	Mod. 180 x 230 Closed h: cm 30 Open h: cm 92 Weight: ca. 95 kg	<b>Art. MP360/12</b> Maggiolina Airlander Plus Carbon 360° X-Large <b>Art. MP360BS/12</b> Maggiolina Airlander Plus Black Storm 360° X-Large
			

**Includes:** 4 universal clamps for attachment to roof bars, 1 opening handle, 2 doors with step by step opening and 2 windows, mosquito-netting on windows and doors, soundproof and anti-condensation roof insulation, 4 removable pockets, stowage net, 1 mattress and 2-3-4 pillows, 2 air vents, 1 interior light, 1 height adjustable alloy ladder, ladder storage bag, elastic straps assist in folding the fabric when closing.

**Optional X-Long for Small and Medium:** instead of the standard 210 cm long, this version is available at 230 cm in length. The X-Long version is suitable for longer length cars, camper vans, RV's and 4x4's.

Weight: Small about 61 kg - Volume: about 210 l\*  
Weight: Medium about 66 kg - Volume: about 235 l\*

### MAGGIOLINA AIRLANDER PLUS 360° X-LARGE

**Includes:** 4 universal clamps for attachment to roof bars, 1 opening handle, 2 doors with step by step opening and 6 windows, mosquito-netting on windows and doors, soundproof and anti-condensation roof insulation, 4 removable pockets, stowage net, 1 mattress and 4 pillows, 2 air vents, 1 interior light, 1 height adjustable alloy ladder, ladder storage bag, elastic straps assist in folding the fabric when closing.



We guarantee that all models of Fibreglass Shell Tents are skilfully constructed entirely by hand. Their composition is very sable and will not weaken or fade over time like common plastic or similar products available on the market.  
In addition, the composition of glass fibre polyester used, is a perfect insulator from hot and cold environments and if necessary can be easily repaired or painted to colour match your vehicle.

The GRP (fibreglass) outer shells are all hand made and finished, therefore some variations may appear in the finished weights (Manufacturers tolerance rate is within 10%).



( I\* ) Approximate value indicating the volumetric capacity of the upper shell of the tent, when the tent is closed



## MAGGIOLINA® EXTREME

<b>SMALL</b>	<b>VOLUME</b> about 203 l*	Mod. 130 x 210 Closed h: cm 33 Open h: cm 90 Weight: about 65 kg	<b>Art. MC/05</b> Maggiolina Extreme Carbon Small <b>Art. MG/05</b> Maggiolina Extreme Gray Small <b>Art. MBS/05</b> Maggiolina Extreme Black Storm Small <b>Art. M/05F</b> Maggiolina Extreme Forest Small
<b>MEDIUM</b>	<b>VOLUME</b> about 228 l*	Mod. 145 x 210 Closed h: cm 33 Open h: cm 90 Weight: about 69 kg	<b>Art. MC/06</b> Maggiolina Extreme Carbon Medium <b>Art. MG/06</b> Maggiolina Extreme Gray Medium <b>Art. MBS/06</b> Maggiolina Extreme Black Storm Medium <b>Art. M/06F</b> Maggiolina Extreme Forest Medium

**Includes:** 2 adjustable load bars on the upper shell, 4 universal clamps for attachment to roof bars, 1 opening handle, 2 doors with step by step opening and 2 triangular windows, mosquito-netting on windows and doors, soundproof and anti-condensation roof insulation, 4 removable pockets, stowage net, 1 mattress and 2-3 pillows, 2 air vents, 1 interior light, 1 height adjustable alloy ladder, ladder storage bag, elastic straps assist in folding the fabric when closing.



## MAGGIOLINA® GRAND TOUR

<b>SMALL</b>	<b>VOLUME</b> about 344 l*	Mod. 130 x 210 Closed h: cm 36 Open h: cm 96 Weight: about 58 kg	<b>Art. MC/12</b> Maggiolina Grand Tour Carbon Small <b>Art. MG/12</b> Maggiolina Grand Tour Gray Small <b>Art. MBS/12</b> Maggiolina Grand Tour Black Storm Small
<b>MEDIUM</b>	<b>VOLUME</b> about 378 l*	Mod. 145 x 210 Closed h: cm 36 Open h: cm 96 Weight: about 62 kg	<b>Art. MC/13</b> Maggiolina Grand Tour Carbon Medium <b>Art. MG/13</b> Maggiolina Grand Tour Gray Medium <b>Art. MBS/13</b> Maggiolina Grand Tour Black Storm Medium
<b>LARGE</b>	<b>VOLUME</b> about 461 l*	Mod. 160 x 215 Closed h: cm 36 Open h: cm 96 Weight: about 73 kg	<b>Art. MC/14</b> Maggiolina Grand Tour Carbon Large <b>Art. MG/14</b> Maggiolina Grand Tour Gray Large <b>Art. MBS/14</b> Maggiolina Grand Tour Black Storm Large

**Includes:** 4 universal clamps for attachment to roof bars, configuration for the attachment of auxiliary bars on outer shell, 1 opening handle, 2 doors with step by step opening and 2 windows, mosquito-netting on doors and windows, soundproof and anti-condensation roof insulation, 4 removable pockets, stowage net, 1 mattress and 2-3-4 pillows, 2 air vents, 1 interior light, 1 height adjustable alloy ladder, ladder storage bag, elastic straps assist in folding the fabric when closing.

## NEW MAGGIOLINA® GRAND TOUR 360°

<b>SMALL</b>	<b>VOLUME</b> about 344 l*	Mod. 130 x 210 Closed h: cm 36 Open h: cm 96 Weight: about 58 kg	<b>Art. M360/15</b> Maggiolina Grand Tour 360° Carbon Small <b>Art. M360BS/15</b> Maggiolina Grand Tour 360° Black Storm Small
<b>MEDIUM</b>	<b>VOLUME</b> about 378 l*	Mod. 145 x 210 Closed h: cm 36 Open h: cm 96 Weight: about 62 kg	<b>Art. M360/16</b> Maggiolina Grand Tour 360° Carbon Medium <b>Art. M360BS/16</b> Maggiolina Grand Tour 360° Black Storm Medium
<b>LARGE</b>	<b>VOLUME</b> about 461 l*	Mod. 160 x 215 Closed h: cm 36 Open h: cm 96 Weight: about 73 kg	<b>Art. M360/17</b> Maggiolina Grand Tour 360° Carbon Large <b>Art. M360BS/17</b> Maggiolina Grand Tour 360° Black Storm Large

**Includes:** 4 universal clamps for attachment to roof bars, configuration for the attachment of auxiliary bars on outer shell, 1 opening handle, 2 doors with step by step opening and 6 windows, mosquito-netting on doors and windows, soundproof and anti-condensation roof insulation, 4 removable pockets, stowage net, 1 mattress and 2-3-4 pillows, 2 air vents, 1 interior light, 1 height adjustable alloy ladder, ladder storage bag, elastic straps assist in folding the fabric when closing.

## AIRTOP®

<b>SMALL</b>	<b>VOLUME</b> about 271 l*	Mod. 130 x 210 Closed h: cm 33 Open h: cm 94 Weight: about 54 kg	<b>Art. ATC/01</b> AirTop Carbon Small <b>Art. ATS/01</b> AirTop Safari Small <b>Art. ATBS/01</b> AirTop Black Storm Small
<b>MEDIUM</b>	<b>VOLUME</b> about 305 l*	Mod. 145 x 210 Closed h: cm 33 Open h: cm 94 Weight: about 59 kg	<b>Art. ATC/02</b> AirTop Carbon Medium <b>Art. ATS/02</b> AirTop Safari Medium <b>Art. ATBS/02</b> AirTop Black Storm Medium
<b>LARGE</b>	<b>VOLUME</b> about 340 l*	Mod. 160 x 215 Closed h: cm 33 Open h: cm 94 Weight: about 72 kg	<b>Art. ATC/03</b> AirTop Carbon Large <b>Art. ATS/03</b> AirTop Safari Large <b>Art. ATBS/03</b> AirTop Black Storm Large

**Includes:** 4 universal clamps for fixing to roof racks or roof bars, 3 doors with step by step opening (1 each side and 1 on the rear), 2 semi-circular windows (1 front and 1 rear) 2 air vents, mosquito mesh on all doors and windows, anti-condensation and soundproofing roof insulation, roof mounted stowage net, 4 removable pockets, 1 mattress and 2-3-4 pillows, 1 internal roof light, 1 height adjustable alloy ladder, ladder storage bag, elastic straps assist in folding the fabric when closing.



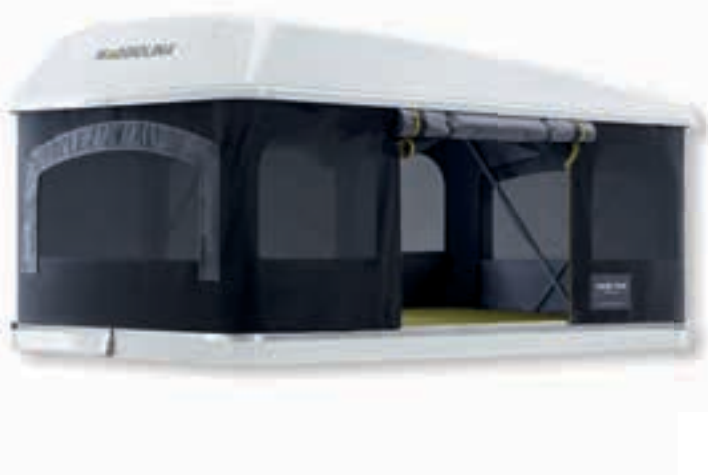


< 26 >



< 28 >

**NEW**






< 30 >






< 32 >

## NEW AIRTOP® — RANGE 360° —

<b>SMALL</b>	<b>VOLUME</b>	Mod. 130 x 210	<b>Art. AT360/01</b>	AirTop 360° Carbon Small
	<b>about</b>	Closed h: cm 33	<b>Art. AT360BS/01</b>	AirTop 360° Black Storm Small
	<b>271 l*</b>	Open h: cm 94		
		Weight: about 54 kg		
<b>MEDIUM</b>	<b>VOLUME</b>	Mod. 145 x 210	<b>Art. AT360/02</b>	AirTop 360° Carbon Medium
	<b>about</b>	Closed h: cm 33	<b>Art. AT360BS/02</b>	AirTop Black Storm Medium
	<b>305 l*</b>	Open h: cm 94		
		Weight: about 59 kg		
<b>LARGE</b>	<b>VOLUME</b>	Mod. 160 x 215	<b>Art. AT360/03</b>	AirTop 360° Carbon Large
	<b>about</b>	Closed h: cm 33	<b>Art. AT360BS/03</b>	AirTop 360° Black Storm Large
	<b>340 l*</b>	Open h: cm 94		
		Weight: about 72 kg		

**Includes:** 4 universal clamps for fixing to roof racks or roof bars, 2 doors with step by step opening, 6 semi-circular windows 2 air vents, mosquito mesh on all doors and windows, anti-condensation and soundproofing roof insulation, roof mounted stowage net, 4 removable pockets, 1 mattress and 2-3-4 pillows, 1 internal roof light, 1 height adjustable alloy ladder, ladder storage bag, elastic straps assist in folding the fabric when closing.

## COLUMBUS®





<b>SMALL</b>	<b>VOLUME</b>	Mod. 130 x 210	<b>Art. C/01</b>	Columbus Small
	<b>about</b>	Closed h: cm 30		
	<b>196 l*</b>	Open h: cm 150		
		Weight: about 52 kg		
<b>MEDIUM</b>	<b>VOLUME</b>	Mod. 145 x 210	<b>Art. C/02</b>	Columbus Medium
	<b>about</b>	Closed h: cm 30		
	<b>220 l*</b>	Open h: cm 150		
		Weight: about 57 kg		
<b>LARGE</b>	<b>VOLUME</b>	Mod. 160 x 215	<b>Art. C/03</b>	Columbus Large
	<b>about</b>	Closed h: cm 30		
	<b>260 l*</b>	Open h: cm 150		
		Weight: about 64 kg		

**Includes:** 4 universal clamps for attachment to roof bars, 2 door/windows with mosquito-netting, soundproof and anti-condensation roof insulation, 1 mattress and 2-3-4 pillows, anti-condensation Air Cap, 1 height adjustable alloy ladder, elastic straps assist in folding the fabric when closing.

**Standard:** Columbus Large is Combi version (rear door with mosquito-netting and fixed privacy screen).

**Optional X-Long for Small and Medium:** instead of the standard 210 cm long, this version is available at 230 cm in length. The X-Long version is suitable for longer length cars, camper vans, RV's and 4x4's.  
Weight: Small about 57 kg - **Volume: about 210 l\***  
Weight: Medium about 62 kg - **Volume: about 235 l\***



## COLUMBUS® — VARIANT —

<b>SMALL</b>	<b>VOLUME</b>	Mod. 130 x 210	<b>Art. CVG/01</b>	Columbus Variant Gray Small
	<b>about</b>	Closed h: cm 30	<b>Art. CVS/01</b>	Columbus Variant Safari Small
	<b>196 l*</b>	Open h: cm 150	<b>Art. CVW/01</b>	Columbus Variant Wild Green Small
		Weight: about 52 kg	<b>Art. CVBS/01</b>	Columbus Variant Black Storm Small
<b>MEDIUM</b>	<b>VOLUME</b>	Mod. 145 x 210	<b>Art. CVG/02</b>	Columbus Variant Gray Medium
	<b>about</b>	Closed h: cm 30	<b>Art. CVS/02</b>	Columbus Variant Safari Medium
	<b>220 l*</b>	Open h: cm 150	<b>Art. CVW/02</b>	Columbus Variant Wild Green Medium
		Weight: about 57 kg	<b>Art. CVBS/02</b>	Columbus Variant Black Storm Medium
<b>LARGE</b>	<b>VOLUME</b>	Mod. 160 x 215	<b>Art. CVG/03</b>	Columbus Variant Gray Large
	<b>about</b>	Closed h: cm 30	<b>Art. CVS/03</b>	Columbus Variant Safari Large
	<b>260 l*</b>	Open h: cm 150	<b>Art. CVW/03</b>	Columbus Variant Wild Green Large
		Weight: about 64 kg	<b>Art. CVBS/03</b>	Columbus Variant Black Storm Large
<b>X-LARGE</b>	<b>VOLUME</b>	Mod. 180 x 230	<b>Art. CVG/04</b>	Columbus Variant Gray X-Large
	<b>about</b>	Closed h: cm 30	<b>Art. CVS/04</b>	Columbus Variant Safari X-Large
	<b>300 l*</b>	Open h: cm 150	<b>Art. CVW/04</b>	Columbus Variant Wild Green X-Large
		Weight: about 90 kg	<b>Art. CVBS/04</b>	Columbus Variant Black Storm X-Large

**Includes:** 4 universal clamps for attachment to roof bars, configuration for the attachment of auxiliary bars on outer shell, 2 doors/windows with mosquito-netting, soundproof and anti-condensation roof insulation, stowage net, 1 mattress and 2-3-4 pillows, interior light, 1 height adjustable alloy ladder, full opening on the back with graduated darkening, outer door with Crystal window, elastic cord for secure rear door closure, anti-condensation Air Cap, ladder storage bag, elastic straps assist in folding the fabric when closing.

**Optional X-Long for Small and Medium:** instead of the standard 210 cm long, this version is available at 230 cm in length. The X-Long version is suitable for longer length cars, camper vans, RV's and 4x4's.  
Weight: Small about 57 kg - **Volume: about 210 l\***  
Weight: Medium about 62 kg - **Volume: about 235 l\***

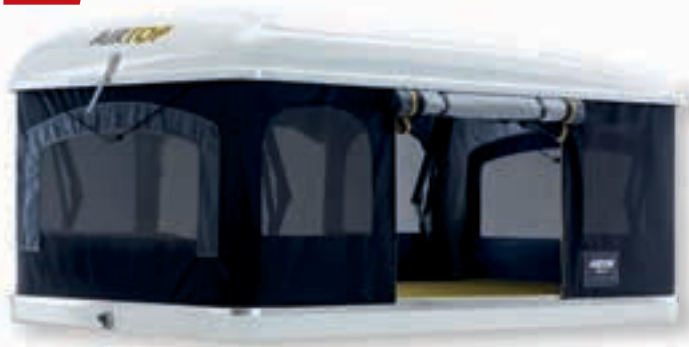
## COLUMBUS® — CARBON FIBER —

<b>SMALL</b>	<b>VOLUME</b>	Mod. 130 x 210	<b>Art. CCF/01</b>	Columbus Carbon Fiber Small
	<b>about</b>	Closed h: cm 30		
	<b>196 l*</b>	Open h: cm 150		
		Weight: about 42 kg		
<b>MEDIUM</b>	<b>VOLUME</b>	Mod. 145 x 210	<b>Art. CCF/02</b>	Columbus Carbon Fiber Medium
	<b>about</b>	Closed h: cm 30		
	<b>220 l*</b>	Open h: cm 150		
		Weight: about 47 kg		

**Includes:** carbon fiber shells, 4 universal clamps for attachment to roof bars, 2 doors/windows with mosquito-netting, soundproof and anti-condensation roof insulation, stowage net, 1 mattress and 2-3 pillows, interior light, 1 height adjustable alloy ladder, full opening on the back with graduated darkening, outer door with Crystal window, anti-condensation Air Cap, ladder storage bag, elastic straps assist in folding the fabric when closing.



NEW



## AIR-CAMPING®

### SMALL



Closed: 130 x 110 x h 35  
Open: 130 x 220 x h 125  
Weight: about 45 kg

**Art. AC/01** Air - Camping Small

### MEDIUM



Closed: 160 x 110 x h 35  
Open: 160 x 220 x h 125  
Weight: about 54 kg

**Art. AC/02** Air - Camping Medium

### LARGE



Closed: 180 x 110 x h 35  
Open: 180 x 220 x h 125  
Weight: about 65 kg

**Art. AC/03** Air - Camping Large

**Includes:** 4 Universal clamps for attachment to roof bars, 2 windows and 2 large doors all with mosquito-netting, 1 mattress and 2-3-4 pillows, 4 awning support poles (hold open doors to create awnings) 1 PVC travel cover, 1 height adjustable alloy ladder.

**Standard:** all models are configured for side (standard) opening.

**Optional:** Explorer opening (Small and Medium models only) for opening over rear (or front) of vehicles.

## OVERLAND®

### SMALL



Closed: 130 x 110 x h 35  
Open: 130 x 220 x h 125  
Weight: about 45 kg

**Art. OLC/01** Overland Carbon Small  
**Art. OLBX/01** Overland Bordeaux Small  
**Art. OLS/01** Overland Safari Small

### MEDIUM



Closed: 160 x 110 x h 35  
Open: 160 x 220 x h 125  
Weight: about 54 kg

**Art. OLC/02** Overland Carbon Medium  
**Art. OLBX/02** Overland Bordeaux Medium  
**Art. OLS/02** Overland Safari Medium

### LARGE



Closed: 180 x 110 x h 35  
Open: 180 x 220 x h 125  
Weight: about 65 kg

**Art. OLC/03** Overland Carbon Large  
**Art. OLBX/03** Overland Bordeaux Large  
**Art. OLS/03** Overland Safari Large

**Includes:** 4 Universal clamps for attachment to roof bars, 2 windows and 2 large doors all with mosquito-netting, 1 mattress and 2-3-4 pillows, 4 awning support poles (hold open doors to create awnings) 1 PVC travel cover, 1 height adjustable alloy ladder. **Standard:** all models are configured for side (standard) opening.

**Optional:** Explorer opening (Small and Medium models only) for opening over rear (or front) of vehicles.

## OVERZONE®

### SMALL



Closed: 130 x 110 x h 35  
Open: 130 x 220  
+ 70 (appendix) x h 125  
Weight: about 48 kg

**Art. OZ/01** Overzone Small

### MEDIUM



Closed: 160 x 110 x h 35  
Open: 160 x 220  
+ 70 (appendix) x h 125  
Weight: about 57 kg

**Art. OZ/02** Overzone Medium

**Includes:** 4 universal clamps to fixing onto roof-bars, two triangular windows with mosquito nets, two large doors with mosquito netting, one mattress and 2/3 pillows, 2 internal pockets, 2 adjustable stakes for unfolding additional outdoor area awning, 2 stakes to hold up back door and create awning, 1 PVC travel cover, the roof stakes are equipped with condensate proof covering, 2 windproof tightening ropes included in the tent's structure, multi-purpose hooks, the tent is pre-arranged for possible supplementary changing-room, 1 height adjustable alloy ladder.

**Standard:** all models are configured for side (standard) opening.

**Optional:** Explorer opening for opening over rear (or front) of vehicles.

## OVERCAMP®

### SMALL



Closed: 65 x 200 x h 35  
Open: 130 x 200 x h 100  
Weight: about 50 kg

**Art. OGY/01** Overcamp Gray Small

### MEDIUM



Closed: 90 x 200 x h 35  
Open: 180 x 200 x h 115  
Weight: about 54 kg

**Art. OGY/02** Overcamp Gray Medium

**Includes:** 4 universal clamps for attachment to roof bars, 2 windows and 2 large doors all with mosquito-netting, 1 mattress and 2-4 pillows, 2 awning support poles, (hold open doors to create awning) 1 PVC travel cover, 1 height adjustable steel ladder.

#### DOUBLE UP SYSTEM

The coupling can be made with the following: Small+Small, Small+Medium, Medium+Medium on large vehicles.







## THE IMPORTANT GOALS ARE







# ALWAYS REACHED TOGETHER



# AUTOHOME®

An Italian company which embraces a precise industrial philosophy based on solid values of consistency, reliability and transparency.



- Supports Made in Italy products
- Furthers technological research
- Selects only top quality materials
- Produces respecting the environment
- Designs using professionals with adventure professionals in mind
- Promotes beauty and design
- Inspires adventure and life outdoors



## 5\* YEARS GUARANTEE

Every single Autohome product has been studied in detail and carried out by utilizing the most suitable materials for its expected use. The fifty-year experience concerning the products allowed the Company to choose suitable materials tested in any different weather and travel conditions.

Strict "Autohome Quality" controls assure that the product is faultless both concerning materials and construction.

\*see notes in the instructions given with the product or ask for information: e-mail: [info@autohome.it](mailto:info@autohome.it)

The tents used the world over by Tour Leaders and Explorers, for extreme car rallies and expeditions, are identical to the standard production: the same product anybody can buy.

Each Autohome roof tent is marked by a Serial Number (label on the internal side of tents' inlet door), which distinguishes the tent and indicates the quality controls it has undergone.

It is recommended to carefully read the general instructions for use and maintenance, which are an integral part of the product and are supplied within its packaging. Pay attention not to lose them! In case of loss, ask for them to the point of sale or to [info@autohome.it](mailto:info@autohome.it)



**AUTOHOME-OFFICIAL.COM**

**LEADER IN  
OFF-ROAD**



**the ROAD**

# **FREEDOM begins where ROADS end.**

**OFF ROAD – the 4x4-magazine for freedom on wheels**



[www.off-road.de](http://www.off-road.de)



**5\***  
**YEARS**  
**WARRANTY**



The indications of this catalogue are not binding and have no contractual value. The manufacturer reserves the right to make technical, constructive and aesthetic modifications on the products without prior notification. All the technical data, colours, weights and measurements are indicative only. All roof tents are hand built and therefore weights may vary slightly. If you need more details, please, contact an authorized reseller or the Manufacturer, also see our General Instructions for Use, Maintenance & Warranty, which are an integral part of the product. The catalogue is printed in Italy and it cannot be reproduced without prior authorisation of the manufacturer.

Info: [www.autohome-official.com](http://www.autohome-official.com)

Any dispute will be dealt with only by the Court in Mantova, Italy.

© Zifer Italia S.r.l. – Any reproduction or partial reproduction is strictly forbidden without the written consent of Zifer Italia S.r.l. - Viale Risorgimento, 23 – 46017 Rivarolo Mantovano (MN) – Italy. Any infringement of intellectual property rights will lead to legal action which may result in prosecution.

PRINTED IN ITALY - JULY 2018



**AUTOHOME-OFFICIAL.COM**



MADE IN ITALY



Autohome-Official